



# INSTRUCTION MANUAL

MEAT GRINDER

Models

PSA-15HD

PSA-25HD



METALÚRGICA SIEMSEN LTDA.

Rua Anita Garibaldi, nº 262 – Bairro: São Luiz – CEP: 88351-410  
Brusque – Santa Catarina – Brasil  
Fone: +55 47 3255 2000 – Fax: +55 47 3255 2020  
www.siemsen.com.br - comercial@siemsen.com.br



E-mail: at@siemsen.com.br

- ALÉM DESTAS MÁQUINAS, FABRICAMOS UMA LINHA COMPLETA DE EQUIPAMENTOS. CONSULTE SEU REVENDEDOR.  
- ESTE PRODUTO CONTA COM ASSISTÊNCIA TÉCNICA, REPRESENTANTES E REVENDEDORES EM TODO TERRITÓRIO NACIONAL.  
DEVIDO À CONSTATANTE EVOLUÇÃO DOS NOSSOS PRODUTOS, AS INFORMAÇÕES AQUI CONTIDAS PODEM SER MODIFICADAS SEM AVISO PRÉVIO.

30821.8 - JULHO/2009

# SUMMARY

<b>1. INTRODUCTION</b>	<b>02</b>
1.1 Safety	02
1.2 Main Components	02
1.3 Technical Characteristics	04
<b>2. INSTALLATION and PRE OPERATION</b>	<b>04</b>
2.1 Installation	04
2.2 Pre Operation	04
<b>3. OPERATION</b>	<b>05</b>
3.1 Grind Device Assembling	05
3.2 Operating Procedures	05
3.3 Starting	06
3.4 Cleaning	06
<b>4. GENERAL SAFETY RULES</b>	<b>06</b>
4.1 Operation Fundamentals Practices	06
4.2 Cares and Observations before to Switch On the Saw	07
4.3 Routine Inspection	08
4.4 Operation	08
4.5 After the Work Ends	08
4.6 Maintenance Performance	09
4.7 Advices	09
<b>5. ANALYSES AND PROBLEM SOLVING</b>	<b>09</b>
5.1 Problems, Causes and Solutions	09
5.2 Analyses and Problem Solving	10
5.3 Electric Diagram Mod. PSA-15HD and PSA-25HD	10

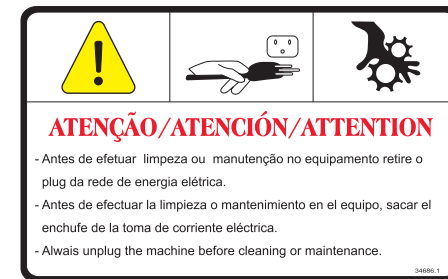
# 1. INTRODUCTION

## 1.1 Safety

When not properly used the Meat Grinders Models PSA-15HD and PSA-25HD can be potentially **DANGEROUS**. Servicing, cleaning or any other operation shall be made by trained people.

The following instructions must be observed in order to avoid accidents:

- 1.1.1** Always unplug the machine when cleaning, servicing or when any other operation is needed.
- 1.1.2** Never use tools that do not belong to the machine during operation.
- 1.1.3** Before switching the machine on check if the Grinding Device N°02 (Pic.01) is firm in its position, if all its internal components are assembled as well as if the Pan N°04 (Pic.01) is mounted.
- 1.1.4** Never spray water or other liquid substances directly at motor, power switch or any other electrical components.
- 1.1.5** Never use loosen clothes specially shirts with loosen sleeves during operation.
- 1.1.6** Never put your fingers or any other object but the Stumper N°01 (Pic.01) inside feeding throat.
- 1.1.7** Keep hands off turning parts.
- 1.1.8** Never switch the machine on with wet clothes or wet shoes.
- 1.1.9** Before using the machine make sure it is properly grounded.



### IMPORTANT

This appliance is not for use by persons (including children) with reduced physical, sensory or mental capabilities, or lack of experience and knowledge, unless they have been given supervision or instruction concerning use of the appliance by a person responsible for their safety.

### IMPORTANT

If the supply cord is damaged, it must be replaced by manufacturer, its service agent or similarly qualified persons in order to avoid a hazard.

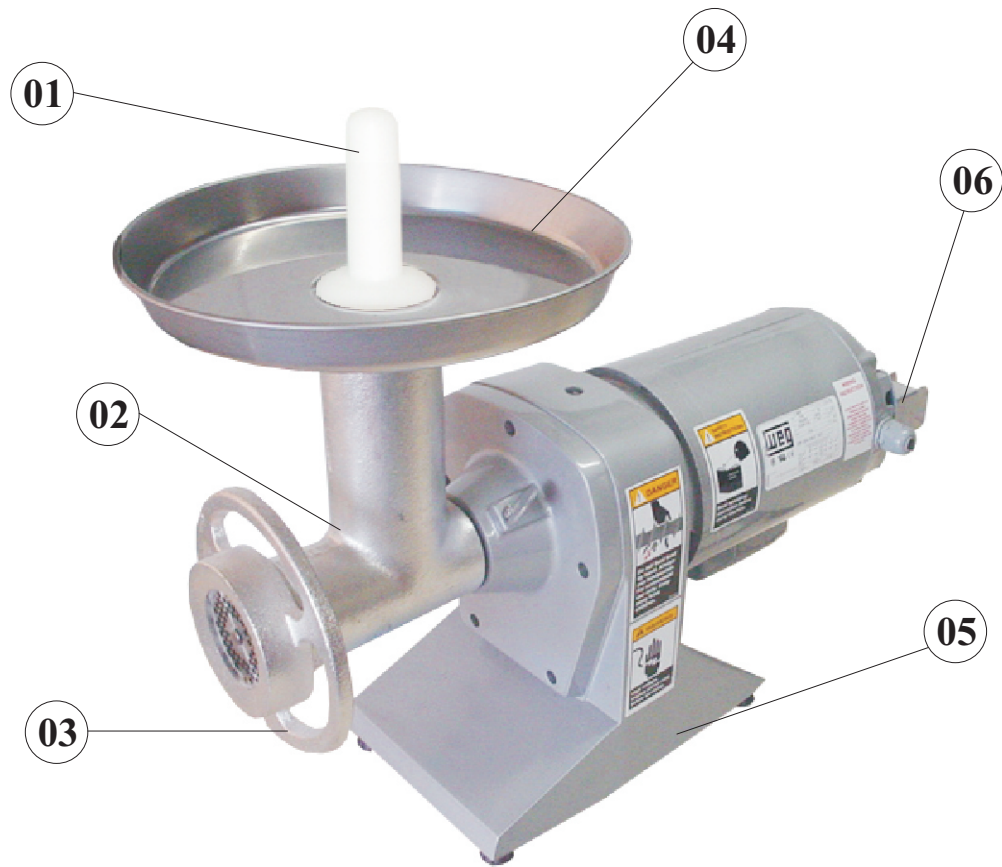
## 1.2 Main Components

All components are made with carefully selected materials, in accordance with Siemens experience and standard testing procedures.

The Barrel N°01 (Pic.02) and the Worm N°03 (Pic.02) receive a superficial treatment to isolate and facilitate cleaning.

Knife and discs are made of hardened material to provide a long life cutting quality.

**Picture - 01**



**1-Stumper**

**2-Barrel**

**3-Locking Ring**

**4-Pan**

**5-Gear Box and Base**

**6-ON/OFF Switch**

## 1.3 Technical Characteristics

**Table – 01**

Characteristics	Unit	PSA-15HD	PSA-25HD
Average Production	kg/h	200	300
Voltage	V	110 or 220(*)	110 or 220(*)
Frequency	Hz	50 or 60 (**)	50 or 60 (**)
Power Rating	HP	1	1,5
Consumption	kW/h	0,73	1,10
Height	mm	520	520
Width	mm	290	290
Depth	mm	640	640
Net Weight	kg	28	28
Gross Weight	kg	35	35

(\*) Voltage will be only one, indicated on motor characteristics label.

(\*\*) Frequency will be only one, indicated on motor characteristics label.

## 2. INSTALLATION and PRE OPERATION

### 2.1 Installation

The Meat Grinder must be installed onto a leveled and stable surface, preferably 850mm high from floor.

Before plugging in the machine check the voltage of the power supply source: 110 or 220 V. Voltage will be only one, indicated on motor characteristics label.

Grounding is mandatory.

### 2.2 Pre Operation

#### **IMPORTANT**

**Do not tighten the Locking Ring too much when assembling the Grinding Device as an excessive pressure on the hole plate and knife may lead to their abnormal wear.**

First of all check if the machine is firm in its position. Before operation all parts that get in contact with food must be washed with running water and neutral soap. For doing that follow the below steps:

**2.2.1** Remove the Stumper N°01 (Pic.01) and the Pan N°04 (Pic.01).

**2.2.2** Remove the Locking Ring N°03 (Pic.01) and then pull out of the Barrel all the internal components.

**2.2.3** Holding the Barrel N°02 (Pic.01) loosen locking knob located on the right side of the Barrel and move it left and right pulling it out at the same time.

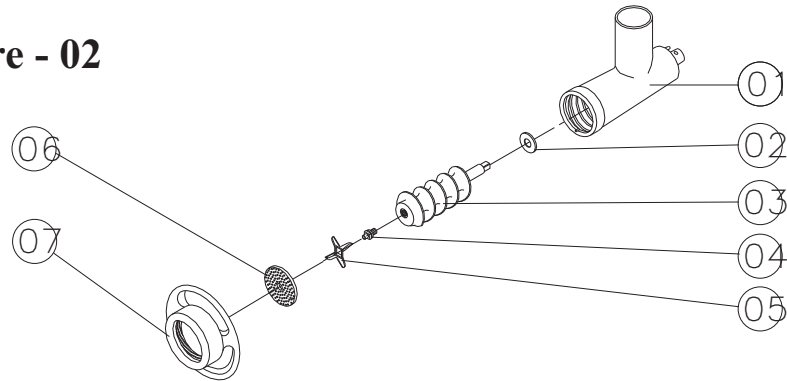
### 3. OPERATION

#### 3.1 Grinding Device Assembling

**IMPORTANT**  
Note the correct position of each Barrel internal component. Assembling the components in a different order could cause serious damages to the Grinding Device.

To assemble or disassemble the Barrel internal components follow the below sequence:

Picture - 02



- 01- Barrel
- 02- Fiber Washer
- 03- Worm
- 04- Worm Pin
- 05- Knife
- 06- Plates 3mm, 5mm or 8mm (optional)
- 07- Locking Ring

#### 3.2 Operating Procedures

**IMPORTANT**  
Under no circumstances use your hands or any other kind of instrument to push meat into the feeding throat. Use only the Stumper N°01 (Pic.01) to do this operation. The processed meat has the function of lubricating the Barrel internal components. Therefore do not run the machine without load, as it would warm up and damage the internal components.

The Meat Grinders Models PSA-15HD and PSA-25HD are relatively fast machines, therefore they need equally be fed.

To feed the Meat Grinders place pieces of meat on the Pan N°04 (Pic.01) and drive

<ul style="list-style-type: none"><li>* The Grinding Device stops during operation.</li></ul>	<ul style="list-style-type: none"><li>* Lack of power.</li><li>* Problem in the internal or external electric circuit of the machine.</li><li>* Worn out or broken gears.</li></ul>	<ul style="list-style-type: none"><li>* Check if machine is plugged in and if there is power at power supply source.</li><li>* Call Technical Assistance</li><li>* Call Technical Assistance</li></ul>
<ul style="list-style-type: none"><li>* Burn smell and/or smoke.</li></ul>	<ul style="list-style-type: none"><li>* Motor or other electrical part with problem.</li></ul>	<ul style="list-style-type: none"><li>* Call Technical Assistance</li></ul>
<ul style="list-style-type: none"><li>* The machine starts but Barrel internal components take some time to start turning.</li></ul>	<ul style="list-style-type: none"><li>* Motor capacitor.</li></ul>	<ul style="list-style-type: none"><li>* Call Technical Assistance</li></ul>
<ul style="list-style-type: none"><li>* Strange noises.</li></ul>	<ul style="list-style-type: none"><li>* Barrel internal components out of place.</li><li>* Gears misaligned.</li></ul>	<ul style="list-style-type: none"><li>* Assemble Barrel internal components correctly.</li><li>* Call Technical Assistance</li></ul>

#### 5.2 Components Adjustment and Replacement

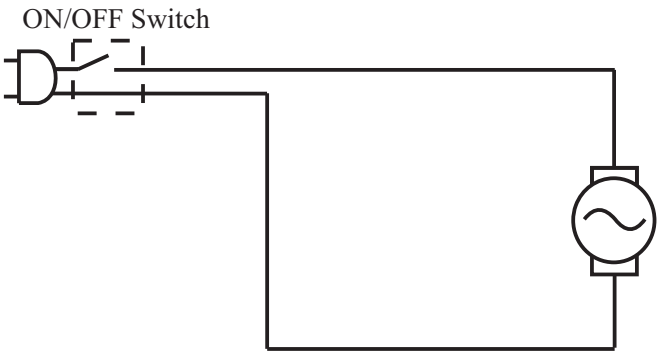
##### 5.2.1 Plate and knife sharpening

Well-sharpened plates and knife will make machine to work with less effort and consequently all components will last longer. Therefore call your nearest technical assistant to sharpen plates and knife periodically.

##### 5.2.2 Gear Box

The Meat Grinders models PSA-15HD and PSA-25HD have gear box permanently lubricated with grease.

#### 5.3 Electric Diagram Mod. PSA-15HD and PSA-25HD



Put all components back to their functional positions before turning it ON again.  
Check level of oil. DO NOT place your fingers in between belts and pulleys nor chains and gears.

## 4.6 Maintenance

### 4.6.1 Danger

Any maintenance with the machine in working situation is dangerous. TURN IT OFF BY PULLING THE PLUG OFF THE SOCKET DURING MAINTENANCE.

**IMPORTANT**  
Always unplug the machine when emergency cases arise.

## 4.7 Advice

Electrical or mechanical maintenance must be done by qualified personal for such operation.  
Person in charge has to be sure that the machine is under TOTAL SAFETY conditions when working.

# 5. Analysis and Problems Solving

## 5.1 Problem, causes and solutions

The Meat Grinders were designed to operate with the need of minimum maintenance but the natural wearing caused by longer use of the equipment may occasionally cause some malfunctions.  
If such problem occurs with your Meat Grinder refer to Table 02 in which the most common situations are listed with recommended solutions.

TABLE - 02

* The processed meat comes out smashed.	* One of the Barrel internal components is missing or they are assembled incorrectly.  *Plate or knife unsharpened.	* Check the correct assembling order according to Picture–02.  * Consult item 5.2.1 in this Manual.
---	---	---

them with your hand towards the feeding throat entry only, then use the Stumper N°01 (Pic.01) to push them into the feeding throat where they will be sucked in.

## 3.3 Starting

Be sure that the Barrel internal components are assembled correctly as per order indicated on Picture–02.  
The machine is activated by pushing the ON/OFF Switch N°06 (Pic.01) located at rear of motor to ON position.

**IMPORTANT**  
Always switch the machine off before removing the Grinding Device. The machine is silent. Do not leave utensils such as: knives, forks and similar on the Pan.

## 3.4 Cleaning

- To do cleaning proceed as follows:
- 3.4.1 Switch the machine off and unplug the machine from power supply source.
  - 3.4.2 Remove the Locking Ring N°07 (Pic.02) and all the Barrel internal components.
  - 3.4.3 Loosen locking knob located on the right side of the Barrel N°01 (Pic.01).
  - 3.4.4 Wash all components with running warm water and neutral soap.
  - 3.4.5 To assemble the Grinding Device follow the above sequence inversely.

**IMPORTANT**  
Do not store the Grinding Device with food inside.

# 4. General Safety Practices

The following safety instructions are addressed to both the operator of the machine as well as the person in charge of maintenance. The machine has to be delivered to the operator in perfect conditions of use by the Distributor to the user. The user shall operate the machine only after being well acquainted with the safety procedures described in the present manual. READ THIS MANUAL WITH ATTENTION.

## 4.1 Basic Operation Practices

**4.1.1 Dangerous parts**  
Some parts of the electric devices are connected to high voltage points. These parts when touched may cause severe electrical shocks or even be fatal.



Never touch commands such as buttons, switches and knobs with wet hands, wet clothes and/or shoes. By not following these instructions operator could be exposed to severe electrical shocks or even to a fatal situation.

#### 4.1.2 Warnings

The operator has to be well familiar with the position of ON/OFF Switch to make sure the Switch is easy to be reached when necessary. Before any kind of maintenance, physically remove plug from the socket.

Provide space for a comfortable operation thus avoiding accidents.

Water or oil spilled on the floor will turn it slippery and dangerous. Make sure the floor is clean and dry.

Before giving any manual command (switch, buttons, turn keys or lever) be sure the command is the correct one. Check this manual for further details if necessary.

Never use a manual command (switch, buttons, lever) unadvisedly.

If any work is to be made by two or more persons, coordination signs will have to be given for each operation step. Every step of the operation shall be taken only if the sign has been made and responded.

#### 4.1.3 Advices

In case of power shortage, immediately turn the machine OFF.

Use recommended or equivalent lubricants, oils or greases.

Avoid mechanical shocks as they may cause failures or malfunction.

Avoid penetration of water, dirt or dust into mechanical or electrical components of the machine.

DO NOT modify original characteristics of the machine.

DO NOT remove, tear off or maculate any labels stuck on the machine. If any label has been removed or is no longer legible, contact your nearest dealer for replacement.

READ CAREFULLY AND WITH ATTENTION THE SAFETY OR OPERATION INSTRUCTIONS LABELS DISPLAYED ON THE MACHINE, AS WELL AS THE INSTRUCTION MANUAL AND THE TECHNICAL CHARACTERISTICS WRITTEN INSIDE.

## 4.2 Safety Procedures and Notes Before Switching Machine ON

### IMPORTANT

**Carefully read ALL INSTRUCTIONS of this manual before turning the machine ON. Be sure to be familiar with the instructions and that you have well understood all information contained in this manual. If you have any question contact your supervisor or your nearest Dealer.**

#### 4.2.1 Danger

An electric cable or electric wire with damaged jacket or bad insulation could cause electrical shocks as well as electrical leak. Before use, check conditions of all wires and cables.

#### 4.2.2 Advices

Be sure ALL INSTRUCTIONS in this manual have been thoroughly understood.

Every function and operational procedure has to be very clear to the operator. Contact your nearest Dealer for further questions.

Any manual command (switch, button or lever) shall be given only after being it is the correct one.

#### 4.2.3 Precautions

The electric cable has to be compatible with the power required by the machine. Cables touching the floor or close to the machine need to be protected against short circuits.

Oil reservoir has to be full up to the required level as indicated. Check level and add oil if necessary.

## 4.3 Routine Inspection

#### 4.3.1 Advice

When checking the tension of the belts or chains, DO NOT introduce your fingers between the belts and the pulleys and nor between the chain and the gears.

#### 4.3.2 Precautions

Check if motors and sliding or turning parts of the machine produce abnormal noises.

Check the tension of the belts and chains and replace the set when belt or chain show signs of being worn out.

When checking tensions of belts or chain DO NOT introduce your fingers between belts and pulleys, nor between the chains and gears.

Check protections and safety devices to make sure they are working properly.

## 4.4 Operation

#### 4.4.1 Advice

Be sure your hair is not loose in order to avoid getting caught by turning parts, which could lead to a serious accident. Tie your hair well up and/or cover your head with a scarf.

The operation performed by not trained or skilled personnel shall be forbidden.

Never touch turning parts with your hands or in any other way.

NEVER operate machine without all original safety devices under perfect conditions.

## 4.5 After Finishing The Work

#### 4.5.1 Precautions

Always TURN THE MACHINE OFF by removing the plug from the socket before cleaning the machine. Never clean the machine unless it has come to a complete stop.