

METALÚRGICA SIEMSEN LTDA.  
CNPJ: 82.983.032/0001-19  
Rodovia Ivo Silveira - km 12, nº 9525, Galpão 1 - Bairro: Bateas - CEP: 88355-202  
Brusque - Santa Catarina - Brasil  
Phone: +55 47 3211 6000 - Fax: +55 47 3211 6020  
www.siemsen.com.br - comercial@siemsen.com.br

50062.3 - VERSÃO 01 - 00001 ATÉ 99999 - INGLÊS

Data de Correção: 10/08/2013

- BESIDES THIS EQUIPMENT, A COMPLETE RANGE OF OTHER PRODUCTS ARE MANUFACTURED, CONSULT OUR DEALERS.  
- DUE TO THE CONSTANT IMPROVEMENTS INTRODUCED TO OUR EQUIPMENTS,  
THE INFORMATION CONTAINED IN THE PRESENT INSTRUCTION MANUAL MAY BE MODIFIED WITHOUT PREVIOUS NOTICE.

WWW.SIEMSEN.COM.BR

INSTRUCTION MANUAL



POTATO PEELER, WITH DOOR, STAINLESS STEEL, 10 kg

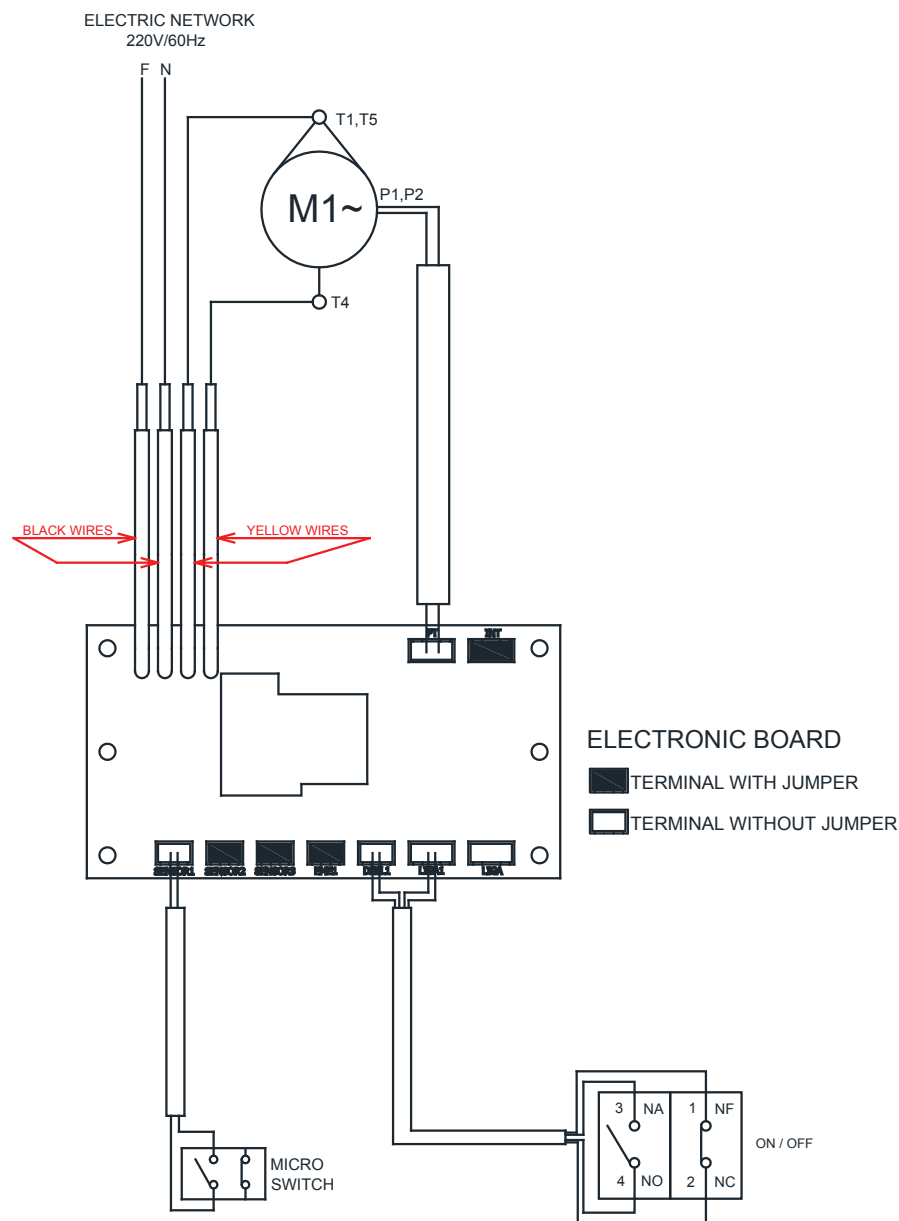
MODEL  
**DB-10-N**

# SUMMARY

|  |           |
|--|-----------|
| <b>1. Introduction .....</b>   | <b>3</b>  |
| <b>1.1 Safety .....</b>  | <b>3</b>  |
| <b>1.2 Main Components .....</b>   | <b>5</b>  |
| <b>1.3 Technical Characteristics .....</b>                                   | <b>6</b>  |
| <b>2. Installation and Pre-Operation.....</b>                                | <b>6</b>  |
| <b>2.1 Installation .....</b>  | <b>6</b>  |
| <b>2.2 Pre Operation .....</b>   | <b>8</b>  |
| <b>3. Operation .....</b>  | <b>8</b>  |
| <b>3.1 Starting.....</b>   | <b>8</b>  |
| <b>3.2 Operating Procedures .....</b>  | <b>8</b>  |
| <b>3.3 Safety System .....</b>   | <b>9</b>  |
| <b>3.4 Cleaning and Sanitizing .....</b>                                     | <b>9</b>  |
| <b>3.5 Cautions with Stainless Steel .....</b>                               | <b>10</b> |
| <b>4. General Safety Practices .....</b>                                     | <b>11</b> |
| <b>4.1 Basic Operation Procedures .....</b>                                  | <b>11</b> |
| <b>4.2 Safety Procedures and Notes before Switching the Machine ON .....</b> | <b>12</b> |
| <b>4.3 Routine Inspection.....</b>   | <b>13</b> |
| <b>4.4 Operation .....</b>   | <b>13</b> |
| <b>4.5 After Finishing The Work.....</b>                                     | <b>13</b> |
| <b>4.6 Maintenance .....</b>   | <b>14</b> |
| <b>4.7 Warning.....</b>  | <b>14</b> |
| <b>5. Analysis and Problems Solving.....</b>                                 | <b>15</b> |
| <b>5.1 Problem, causes and solutions .....</b>                               | <b>15</b> |
| <b>5.2 Adjustments and components replacement .....</b>                      | <b>15</b> |
| <b>6. Maintenance .....</b>  | <b>17</b> |
| <b>7. Electric Diagram.....</b>  | <b>18</b> |

This image shows a single sheet of white paper with horizontal ruling lines. The lines are evenly spaced and run across the width of the page. There are no margins, text, or other markings on the paper.

## 7. Electric Diagram



Electric Diagram code: 50063.1  
 Electric diagram version: Version 01

## 1. Introduction

### 1.1 Safety

When not properly used this equipment is a potentially dangerous machine. Maintenance, servicing, cleaning or any other operation shall be made by trained people. Plug has to be off outlet during any of these operations

Below instructions shall be respected to avoid accidents:

1.1.1 Read completely these instructions

1.1.2 To avoid to risk electric shocks and damage to the equipment never use it with wet clothes or shoes and/or standing on wet floors. Do not plunge it into water nor any other liquid, do not spray water directly to the equipment.

1.1.3 When the equipment is in operation the operator shall supervise it, principally when children might be near

1.1.4 Unplug the equipment when :

It is not in use, before to clean it, before to remove or to place some accessory. Before maintenance or any other service.

1.1.5 Do not operate the equipment if the cord or plug are damaged. Do not lean the cord on table edges, nor let them lie on hot surfaces.

1.1.6 When the equipment may have fall, have been damaged any way, or simply does not work, take it to Technical Assistance to check.

1.1.7 The use of accessories not recommended by the manufacturer may cause corporal damages.

1.1.8 Keep the hands or any other object away from moving parts while the equipment is in operation.

1.1.9 During operation never wear loose clothes with wide sleeves principally around the wrists.

1.1.10 Make sure the equipment voltage and the network voltage are the same, and the equipment has been solidly grounded.

1.1.11 When placing the Disc #.08 (Pic.01) make sure its perfect fitting on Central Shaft Pin # 02 (Pic. 02) avoiding to damage the equipment.

**IMPORTANT**

**For mayor operator protection this equipment is provided with a safety system not allowing to be involuntary switched ON after an eventual energy shortage.**

**IMPORTANT**

**Make sure the cord is in perfect conditions for use. If it is not, change it for a new one in accordance with the technical specifications and safety rules. The substitution shall be made by a qualified professional, and shall respect the local safety norms.**

**IMPORTANT**

**This equipment must not be used by children or any persons with reduced physical or mental aptness, lack of experience or knowledge, unless they are under supervision or have received from the person responsible for safety, proper instructions on how to use the equipment.**

**IMPORTANT**

**Children shall be watched in order to avoid them to play with the equipment.**

**IMPORTANT**

**In case of emergency take off the plug from its socket.**

**IMPORTANT**

**Never spray water directly on to the equipment.**

## **6. Maintenance**

Maintenance must be considered a set of procedures with the purpose to keep the equipment best operating conditions, therefore increasing the equipment life and safety.

\* Cleaning – Check item 3.4 Cleaning.

\* Wiring – Check all wires regarding deteriorate conditions as well as all electric contacts (terminals) regarding tightening and corrosion.

\* Contacts – ON/OFF switch, emergency button, reset button, electronic circuits etc, check the equipment in order to assure that all components are correctly working and the equipment operation is normal.

\* Installation – Make sure the installation followed item 2.1 instructions.

1 - Each month check:

- Check the electrical installation;
- Measure the voltage at the socket;
- Measure the working current and match it with the nominal current;
- Check the tightening of all electric terminals to avoid bad contacts ;
- Check electric motor shaft clearance;
- Check the wiring for overeating, insulation failures and mechanical damages.

2 - Each three month checks:

- Check electrical components such as ON/OFF switch, emergency button, reset button, electronic electric circuits, overeating, insulation failings, or mechanical damages.
- Check bearings clearances.
- Check retainers, O'rings, V'rings and other seals.

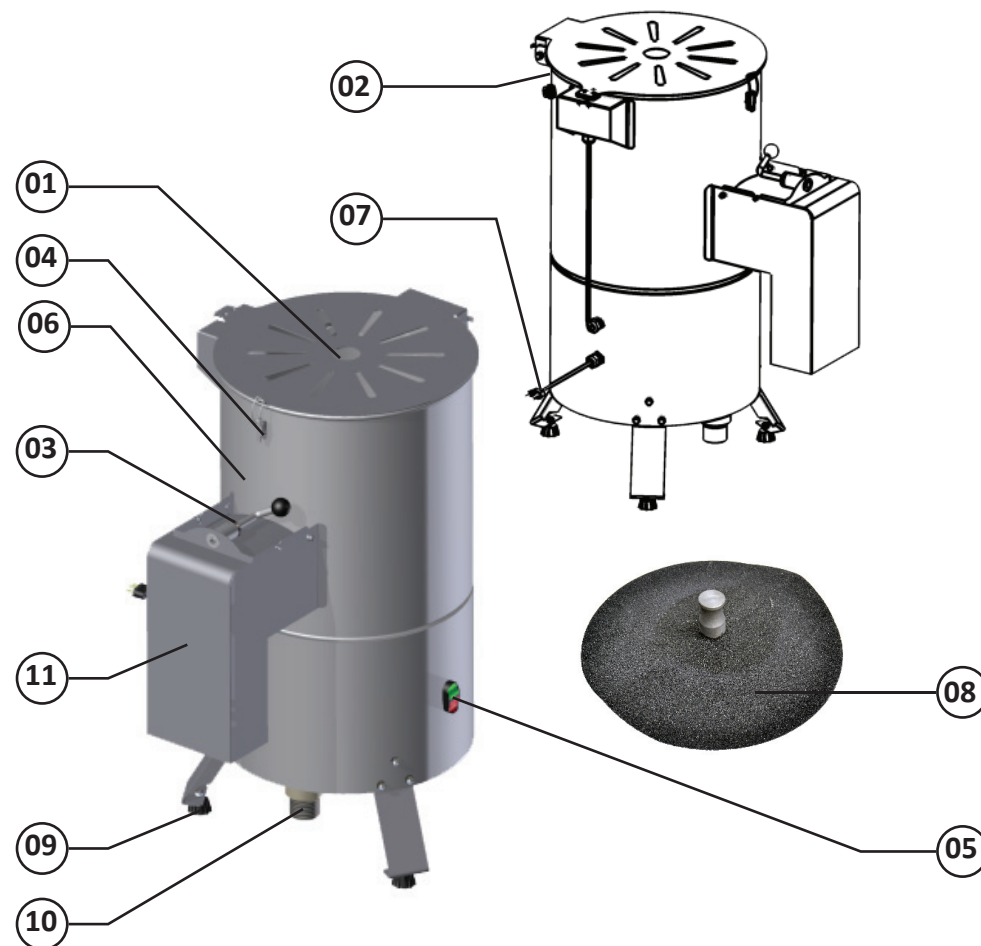
**TABLE 02**

| PROBLEM   | CAUSE   | SOLUTION  |
|---|---|---|
| The machine does not start;   | Electric energy shortage;<br>Problem with the internal or external wiring ; | Check electric Energy source;<br>Call Technical Assistance; |
| Burnt smell or smoke;   | Problem with the internal or external wiring;                               | Call Technical Assistance;                                  |
| The machine starts, but when the product is placed on the Disc, the Disc stops or turns slowly; | Belts sliding;<br>Problem with the Electric motor;"                         | Call Technical Assistance;<br>Call Technical Assistance;    |
| Damaged Cord;   | Problem during transportation;  | Call Technical Assistance;                                  |
| Abnormal Noises;  | Problems with the bearings;   | Call Technical Assistance;                                  |

## 1.2 Main Components

All components are made with carefully selected materials, in accordance with Siemens experience and standard testing procedures.

**PICTURE 01**

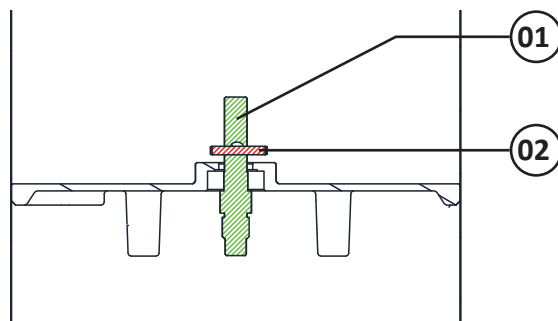


01 - Lid  
02 - Nipple ,Water Entrance  
03 - Door  
04 - Safety Switch  
05 - ON/OFF Switch  
06 - Housing

07 - Cord with Plug  
08 - Disc  
09 - Feet  
10 - Exit Pipe  
11 - Product Exit Mouth

**PICTURE 02**

01 - Central Shaft  
02 - Central Shaft Pin



### 1.3 Technical Characteristics

**TABLE 01**

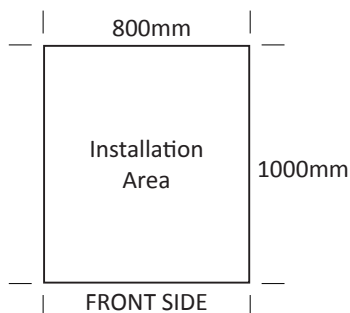
| CHARACTERISTICS    | UNIT | DB-10-N   |
|--------------------|------|-----------|
| Average Production | Kg/h | Up to 200 |
| Voltage            | V    | 220       |
| Frequency          | Hz   | 60        |
| Power Rating       | HP   | 1/2       |
| Consumption        | Kw/h | 0,36      |
| Height             | mm   | 855       |
| Width              | mm   | 620       |
| Depth              | mm   | 710       |
| Net Weight         | Kg   | 36        |
| Shipping Weight    | Kg   | 40.3      |

## 2. Installation and Pre-Operation

### 2.1 Installation

#### 2.1.1 Placing

The equipment must be placed on to a plane and dry surface.



## 5. Analysis and Problems Solving

### 5.1 Problem, causes and solutions

The Peelers were designed to operate with the need of minimum maintenance but the natural wearing caused by long use of the equipment may occasionally cause some malfunctions.

If such problem occurs with your peeler refer to Table 02 in which the most common situations are listed with recommended solutions.

### 5.2 Adjustments and components replacement

The Disc # 08 (Pic.01) is coated with ALUMINIUM OXIDE, responsible to wear the potatoes peel. After some time the Aluminium Oxide will be worn out and therefore the machine efficiency will drop.

Whenever it happens take the disc to Technical Assistance to renew the coat.

## 4.6 Maintenance

### 4.6.1 Danger

Any maintenance with the machine in working situation is dangerous.

TURN IT OFF BY PULLING THE PLUG OFF THE SOCKET DURING MAINTENANCE.

#### IMPORTANT

Always remove the plug from the socket in any emergency situation.

### 4.7 Warning

Electrical or mechanical maintenance has to be undertaken by qualified personnel.

The person in charge of maintenance has to be sure that the machine is under TOTAL SAFETY conditions when working.

### 2.1.2 Electric Installation

This equipment has been designed for 220 V, When receiving the equipment check the voltage indicated on the cord label.

The cord has a plug with three pins, the middle one is ground. It is mandatory the three pins to be duly connected before to start the machine.

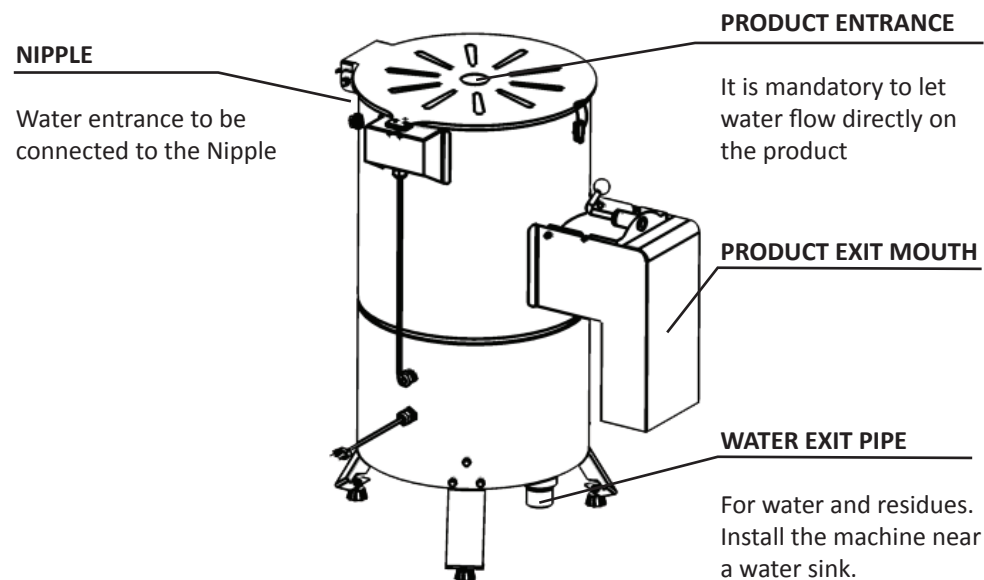
#### IMPORTANT

Make sure the network voltage is the same as the voltage indicated on the cord label.

### 2.1.3 Hydraulic Installation

It is recommended to install the machine near a water sink connecting it with a pipe to the water Exit Pipe # 10 (Pic.01). Install also a 3/4" water inlet pipe and connect it to the Water Entrance Nipple # 02 (Pic 01 ).

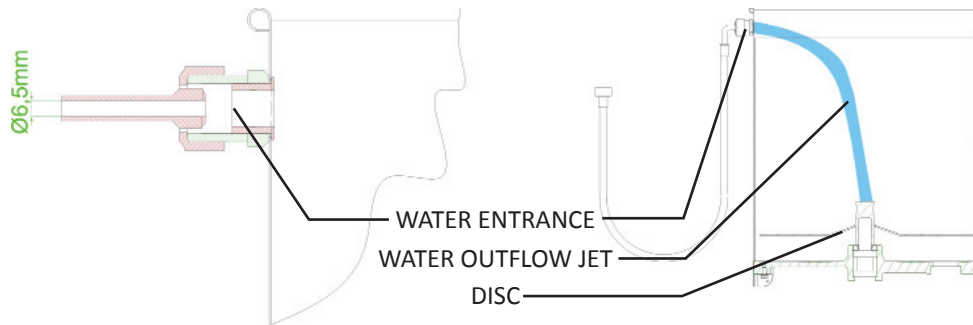
PICTURE 03



The water outflow jet shall not drop beyond the disc centre as shown on Picture 04.

The water outflow shall not exceed 2.5 litres per minute.

PICTURE 04



## 2.2 Pre Operation

Before to use the equipment all parts to be in contact with the product shall be washed with water and neutral soap (see item 3.4 Cleaning).

Make sure the equipment is firm on its working place.

## 3. Operation

### 3.1 Starting

To start the equipment:

- Plug the equipment to the electric network.
- Press the ON/OFF Switch # 05 (Pic.01) to position "I"

### 3.2 Operating Procedures

#### IMPORTANT

**Never place the hand on the Disc while it is on movement.**

- Place the product inside the equipment.
- Close the Lid.
- The equipment does not start if the Lid # 01 (Pic.01) is not closed.
- Open the water flow.
- Start the equipment pressing the ON/OFF Switch to position "I".
- The Peeler has a maximum capacity of 10 Kg potatoes and the processing time is 1.5 to 2 minutes.
- Remove the product using the Product Exit Mouth # 11 (Pic.01) just lifting the Door # 03 (Pic.01) letting go completely out all the product.

## 4.3 Routine Inspection

### 4.3.1 Advice

When checking the tension of the belts or chains, DO NOT insert your fingers between the belts and the pulleys and nor between the chain and the gears.

### 4.3.2 Precautions

Check the motor and sliding or turning parts of the machine in case of abnormal noises.

Check the tension of the belts and chains and replace the set when belts or chains show signs of wearing.

When checking the tension of belts or chains DO NOT insert your fingers between belts and pulleys, nor between the chains and gears.

Check protections and safety devices to make sure they are working properly.

## 4.4 Operation

### 4.4.1 Warnings

Do not use the machine with long hair that could touch any part of the machine. This might lead to a serious accident. Tie your hair up well and/or cover it with a scarf.

- Only trained or skilled personnel shall operate this machine.
- Never touch turning parts with your hands or any other way.
- NEVER operate the machine without any original safety devices under perfect conditions.

## 4.5 After Finishing The Work

### 4.5.1 Precautions

Always TURN THE MACHINE OFF before cleaning by removing the plug from the socket.

Never clean the machine unless it has come to a complete stop.

Put all the components back to their functional positions before turning the machine ON again.

Check the level of oil.

DO NOT insert your fingers in between belts and pulleys nor chains and gears.



- Avoid mechanical shocks, once they may cause damages or bad functioning.
- Avoid water, dirt or dust contact to the mechanical and electrical components of the machine.
- DO NOT change the standard characteristics of the machine.
- DO NOT remove, tear off or maculate any safety or identification labels stuck on the machine. If any labels have been removed or are no longer legible, contact your nearest dealer for replacement.

#### 4.2 Safety Procedures and Notes before Switching the Machine ON

##### **IMPORTANT**

**Carefully read ALL INSTRUCTIONS of this manual before turning the machine ON. Be sure to well understand all the information contained in this manual. If you have any question contact your supervisor or your nearest Dealer.**

##### 4.2.1 Danger

An electric cable or electric wire with damaged jacket or bad insulation might cause electrical shocks as well as electrical leak. Before use, check the conditions of all wires and cables.

##### 4.2.2 Advices

Be sure to well understand all the information contained in this manual. Every operation function or procedure has to be thoroughly clear.

Before using any commands (switch, buttons, lever), be sure it is the correct one. In case of doubt, consult this manual.

##### 4.2.3 Precautions

The electric cable has to be compatible with the power required by the machine.

Cables touching the floor or close to the machine need to be protected against short circuits.

The oil reservoirs have to be filled until the indicated level. Check and refill if necessary.

##### **OBSERVATION**

**For your own safety read all the machine stickers.**

### 3.3 Safety System

For mayor operator protection this equipment is provided with a safety system not allowing to be involuntary switched ON after an eventual energy shortage.

The equipment does not work if the Lid # 01 (Pic.01) is not correctly fitted.

### 3.4 Cleaning and Sanitizing

##### **IMPORTANT**

**Unplug the machine from the electric network, before to start cleaning.**

The equipment shall be totally cleaned and sanitized:

- Before the first use
- After every day operation is ended
- After a long period without being used.

Some parts of the equipment may be removed:

- Disc # 08 (Pic.01)

To achieve a good machine cleaning , follow instructions below:

1. Start the machine empty , and let it work during some minutes, adding abundant water.
2. Switch OFF the machine and unplug it . Wait for the Disc #.08 (Pic..01) to stop completely.
3. Clean the outside of the housing with a wet cloth.
4. Remove Disc #. 08 (Pic.01).
5. Clean the Disc using a nylon brush and abundant water.
6. Replace the Disc inside the machine. Make sure to have the Disc fitting on the central shaft pin # 02 (Pic.02).

All parts shall be washed with water and neutral soap.

##### **IMPORTANT**

**Never spray water directly on to the equipment.**

### 3.5 Cautions with Stainless Steel

The Stainless Steel may present rust signs, which ARE ALWAYS CAUSED BY EXTERNAL AGENTS, especially when the cleaning or sanitization is not constant and appropriate.

The Stainless Steel resistance towards corrosion is mainly due to the presence of chrome, which in contact with oxygen allows the formation of a very thin protective coat. This protective coat is formed through the whole surface of the steel, blocking the action of external corrosive agents.

When the protective coat is broken, the corrosion process begins, being possible to avoid it by means of constant and adequate cleaning. Cleaning must always be done immediately after using the equipment. For such end, use water, neutral soap or detergent, and clean the equipment with a soft cloth or a nylon sponge. Then rinse it with plain running water, and dry immediately with a soft cloth, this way avoiding humidity on surfaces and especially on gaps.

The rinsing and drying processes are extremely important to prevent stains and corrosion from arising.

#### IMPORTANT

**Acid solutions, salty solutions, disinfectants and some sterilizing solutions (hypochlorites, tetravalent ammonia salts, iodine compounds, nitric acid and others), must be AVOIDED, once it cannot remain for long in contact with the stainless steel.**

These substances attack the stainless steel due to the CHLORINE on its composition, causing corrosion spots (pitting).

Even detergents used in domestic cleaning must not remain in contact with the stainless steel longer than the necessary, being mandatory to remove it with plain water and then dry the surface completely.

Use of abrasives:

Sponges or steel wool and carbon steel brushes, besides scratching the surface and compromising the stainless steel protection, leave particles that rust and react contaminating the stainless steel. That is why such products must not be used for cleaning and sanitization. Scrapings made with sharp instruments or similar must also be avoided.

Main substances that cause stainless steel corrosion:

Dust, grease, acid solutions such as vinegar, fruit juices, etc., saltern solutions (brine), blood, detergents (except for the neutral ones), common steel particles, residue of sponges or common steel wool, and also other abrasives.

## 4. General Safety Practices

#### IMPORTANT

**If any recommendation is not applicable to your equipment, please ignore it.**

The following safety instructions are addressed to both the operator of the machine as well as the person in charge of maintenance.

The machine has to be delivered only in perfect conditions of use by the Distributor to the user. The user shall operate the machine only after being well acquainted with the safety procedures described in the present manual. **READ THIS MANUAL WITH ATTENTION.**

### 4.1 Basic Operation Procedures

#### 4.1.1 Dangers

Some areas of the electric device have parts that are connected or have parts connected to high voltage. These parts when touched may cause severe electrical shocks or even be lethal.

Never touch manual commands such as switches, buttons, turning keys and knobs with your hands wearing wet clothes and/or wet shoes. By not following these instructions operator could be exposed to severe electrical shocks or even to a lethal situation.

#### 4.1.2 Warnings

The operator has to be well familiar with the position of ON/OFF Switch to make sure the Switch is easy to be reached when necessary.

Before any kind of maintenance, physically remove plug from the socket.

Provide space for a comfortable operation thus avoiding accidents.

Water or oil spilled on the floor will turn it slippery and dangerous. Make sure the floor is clean and dry.

Before using any commands (switch, buttons, lever), be sure it is the correct one. In case of doubt, consult this manual.

Never touch any manual commands (switch, buttons, lever) unadvisedly.

If any work is to be made by two or more persons, coordination signs will have to be given for each operation step. Every step of the operation shall be taken only if a sign has been made and responded.

#### 4.1.3 Advices

In case of power shortage, immediately switch the machine off.

- Use recommended or equivalent lubricants, oils or greases.