



Over the last 60 years, Omcan has grown to become a leading supplier to the food service industry in Canada and the USA. Our success over these many years is directly attributed to our established relationships with all of our valued customers and through providing them with Diverse, Dependable and Proven products. Omcan continues to help our customers remain competitive.

With associates in North America, Europe, and Asia, our global footprint continues to expand as we hold to the principle that clients benefit from the accessibility and familiarity of our sales team. In 2013 as our geography and brand recognition continued to grow, we changed to one name Omcan Food Machinery.

In over 200,000 sq ft of warehouse space we stock over 2,500 quality food equipment and supplies for the food preparation market.



Potato Peeler Model DB-25HD Instruction Manual



51658.9 - Version 01



3115 Pepper Mill Court, Mississauga, ON, L5L 4X5
1889 Maryland Avenue, Niagara Falls, NY, 14305

1-800-465-0234
www.omcan.com



Table of Contents

Model DB-25HD

Section	Page
General Information -----	3
Safety & Warranty -----	3 - 5
Technical Specifications -----	5 - 6
Installation -----	7
Operation -----	7 - 8
Maintenance -----	8 - 9
Troubleshooting -----	9 - 10
Parts Breakdowns -----	11 - 14
Electrical Schematics -----	15
Warranty Registration -----	17

Warranty Registration

Thank you for purchasing an Omcan product. To register your warranty for this product, complete the information below, tear off the card at the perforation and then send to the address specified below. You can also register online by visiting:

www.omcan.com/warrantyregistration.html



For mailing in Canada

OMCAN INC.
PRODUCT WARRANTY REGISTRATION
3115 Pepper Mill Court,
Mississauga, Ontario
Canada, L5L 4X5

For mailing in the US

OMCAN
PRODUCT WARRANTY REGISTRATION
1889 Maryland Avenue,
Niagara Falls, New York
USA, 14305



Purchaser's Information

Name: _____ Company Name: _____

Address: _____

City: _____ Province or State: _____ Postal or Zip: _____ Telephone: _____

Country: _____ Email Address: _____

Dealer from which Purchased: _____ Type of Company: _____

Dealer City: _____ Dealer Province or State: _____ ☐ Restaurant ☐ Bakery ☐ Deli

Invoice: _____ ☐ Butcher ☐ Supermarket ☐ Caterer

☐ Institution (specify): _____

☐ Other (specify): _____

Model Name: _____ Model Number: _____ Serial Number: _____

Machine Description: _____

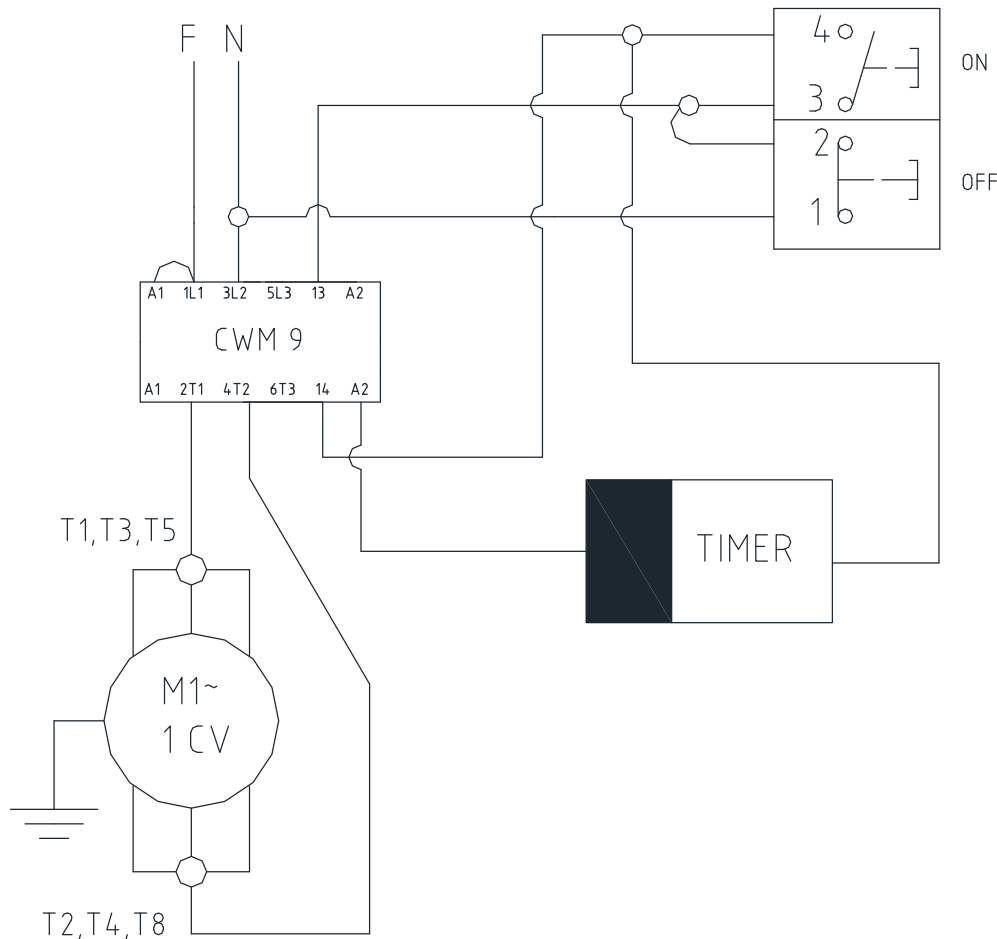
Date of Purchase (MM/DD/YYYY): _____ Date of Installation (MM/DD/YYYY): _____

Thank you for choosing Omcan

Electrical Schematics

Model DB-25HD 20367

110 V/60 Hz



General Information

Omcen Manufacturing And Distributing Company Inc. and Food Machinery Of America, Inc. dba Omcen are not responsible for any harm or injury caused due to any person's improper or negligent use of this equipment. The product shall only be operated by someone over the age of 18, of sound mind, and not under the influence of any drugs or alcohol, who has been trained in the correct operation of this machine, and is wearing authorized, proper safety clothing. Any modification to the machine voids any warranty, and may cause harm to individuals using the machine or in the vicinity of the machine while in operation.

When misused, the Potato Peeler DB-25HD can be potentially DANGEROUS. Maintenance, cleaning or any other service of this machine must be made only by properly trained technicians and the power plug must be disconnected. For your safety, the following instructions must be followed in order to avoid accidents.

Safety & Warranty

1. Unplug the machine when you need to remove any removable part during cleaning, maintenance or any other operation.
2. Never make use of any tool or instrument that is not originally part of the machine during any operation.
3. Never touch the Abrasive Disc (Pic. 1, #7) when the machine is working because it can cause injury.
4. Keep hands away from moving parts.
5. When replacing the Abrasive Disc (Pic. 1, #7), ensure that it perfectly fits into the Central Shaft Pin (Pic. 2, #2) to avoid damages to the machine.

1 YEAR BENCH WARRANTY

WARNING:

The packaging components (are classified as normal solid urban waste and can therefore be disposed of without difficulty.

In any case, for suitable recycling, we suggest disposing of the products separately (differentiated waste) according to the current norms.

DO NOT DISCARD ANY PACKAGING MATERIALS IN THE ENVIRONMENT!

Safety and Warranty



ATTENTION

Always unplug the machine before cleaning or maintenance.

IMPORTANT

This equipment is not to be used by persons (including children) with any physical or mental disabilities, or without operation experience and knowledge, only acquired by means of instruction and supervision of a security staff.

IMPORTANT

If the cord is not in a condition to be used, to avoid accidents it must be replaced through the supplier, an authorized technician or someone qualified for the service.

DANGERS

Some areas of the electric device have parts and terminals that are connected to high voltage. These parts may cause severe, or even lethal, electrical shocks when touched. Never touch manual commands such as switches, buttons, keys and knobs with wet hands, wet clothes and/or wet shoes. By not following these instructions, the operator could be exposed to severe, or even fatal, electrical shocks.

WARNINGS

The operator has to be familiar with the position of the ON / OFF switch to make sure the switch is easily accessed when necessary. Before any kind of maintenance, physically remove the plug from its socket. Provide space for comfortable operation to avoid accidents. Water or oil spilled on the floor will be slippery and dangerous. Make sure the floor is clean and dry. Never use a manual command (switch, buttons, lever) without full understand of the function. If any work is to be made by two or more persons, coordination signs will have to be given for each operation step. Every step of the operation shall be taken only if a sign has been made and responded.

RECOMMENDATIONS

In case of power shortage, immediately turn the machine OFF. Use recommended or equivalent lubricants, oils or greases. Avoid mechanical shocks as they may cause failures or malfunction. Do not allow water, dirt or dust to penetrate the mechanical or electrical components of the machine. DO NOT MODIFY the original characteristics of the machine. DO NOT MODIFY original characteristics of the machine. DO NOT REMOVE, TEAR OFF OR TAMPER any safety or identification labels of the machine. If any label has been removed or is no longer legible, contact your nearest dealer for a replacement.

SAFETY PROCEDURES AND NOTES BEFORE SWITCHING THE MACHINE ON

IMPORTANT

Carefully read ALL instructions of this manual before turning the machine ON. Be sure to be familiar with the instructions and that you understand all information contained in this manual. If you have any questions, contact your nearest dealer.

Parts Breakdown

Model DB-25HD 20367

Description	Item No.
MOTOR 0,25CV 60HZ 110/220	28785.7
PFS SEX UNC1/4"x3/4" RTZB	00030.2
SCREW 5/16"x5/16"	00031.0
LOGOTIPO SKYMSEN 145mm	00167.8
CLAMP K22 (T-50R)	00210.0
OXID OF ALUMINIUM	00257.7
WASHER L 1/4"	00269.0
TERM. PRE-ISOL.165012	00736.6
MOVING POLEY	00955.5
INSULATING TERM. EF-4228	01213.0
SPHERE WITH HOLE 1/2"	01661.6
WASHER L A8,4 ZB	02730.8
RING 10X1 DIN 471	03115.1
ALLEN SCREW M6X8	03188.7
WASHER L 3/8" STAINLESS STEEL	03213.1
NYLON COVER CN-4478	03678.1
KNOB M5X10MM	03967.5
SCREW M6X16	03988.8
CRAMP T-18R-SMALL	04203.0
SCREW M8X20 DIN 933 ZB	04474.1
GLUE KIT DB/DP-10/DC	04636.1
MB	05504.2
SCREW M6X20 DIN 965 STAINLESS STEEL	08779.3
RING 47X1,75 DIN 472	09217.7
ID LABLE MOTOR/RESIST	10204.0
SCREW M6X12 DIN 933 S/S	12384.6
BELT A 22	12945.3
TIMER FOR DB-10	14050.3
SCREW M4X10	14463.0
SCREW B.3,5X9,5 DIN 7971	15599.3
TIMER LABEL	16833.5

Description	Item No.
SPACER WASHER	16971.4
PFS B.3,5x19 DIN 7981 In	16973.0
SCREW M8X16 DIN 933 ZB	19059.4
COLA PREPARADA DB/DP-10	20468.4
SCREW M5X10 DIN 933 SS	21081.1
RING 10 DIN 6799	21127.3
CABLE 3X1,5MM2 WITH PLUG	22491.0
PFS M5x5 DIN 916 INOX	22786.2
PFS M6x30 DIN 933 INOX	24861.4
KEY WAY 4.76X25	25657.9
CONTACTOR CWM18.10 110V 50/60	26218.8
ON / OFF SWITCH	26228.5
FIO INTERNO 2x1,5x1000mm	26323.0
OMCAN LOGO (MACHINES)	27154.3
BUTTON	27551.4
BEARING 6005 DDU	28584.6
MOTOR 1,0CV 60HZ	28785.7
SILICONE PROTECTION CAP	29693.7
ETIQ.PARA BOTOEIRA TIMER	31211.8
CORD HOLDER PG13,5 LC+P/9	31923.6
WATER INLET SET	33630.0
FUNDO USINADO (JATEADO)	34132.0
CENTRAL SHAFT	34133.9
ARO USINADO (CINZA)	34139.8
CS GABINETE DB/DBC-25HD	34141.0
MOVED PULLEY POLY V (PRIMER)	34165.7
POLIA MOT. POLY V(PRIMER)	34174.6
RETAINER 25X47X10	34175.4
CENTRAL SHAFT PIN	34176.2
RUBBER PROTECTION	34177.0
ARRUELA 7x30x3	34179.7

Description	Item No.
FUNDO COMPLETO	34181.9
TUBO DE SAIDA	34198.3
FECHAMENTO DO FUNDO	34205.0
PE USINADO (JATEADO)	34209.2
ARO COM PES MONTADO	34210.6
MOLA DO GATILHO	34215.7
SEPARADOR DA PORTA	34218.1
TAMPA DO GATILHO	34225.4
FUNNEL LID (MOL.37663.9)	34305.6
REVETING PLATE	34312.9
ADAPT.CURTO ROSCA D.60x2"	34329.3
ARRUELA DE NYLON	34330.7
DOOR SET DB-25HD	34339.0
SUPORTE DO MOTOR(CINZA)	34354.4
EIXO DO GATILHO C/DOBRA	34365.0
ABRASIVE DISC DB/C-25HD	34366.8
POLY BELT V 12PJ	34421.4
MAINTENANCE/CLEANING LABEL	34686.1
DIAMOND RUBBER PLATE SET.	35214.4
COATING SET DB-25HD	35216.0
TAMPA DA TRAVA LATERAL	35264.0
PINO DA TRAVA LATERAL	35266.7
SIDE LOCK SPRING	35280.2
CHAPA CONTATORA(CINZA)	36094.5
NIPPLE/REDUCTION SET	36394.4
PLACA DIAMANT.4x180x233mm	36456.8
OXIDO DE ALUMINIO No.46	36969.1
ETIQ.SERVICO PESADO	38533.6
INSULATION FRAME	44569.0
POLIA MOVIDA D.164(PRIMER)	46047.8
ETIQ.LIMPEZA/MANUTENCAO	50665.6

Safety and Warranty

DANGER

An electric cable or electric wire with a damaged jacket or bad insulation could cause electrical shocks as well as electrical leaks. Before using the equipment, check conditions of all wires and cables.

RECOMMENDATIONS

Be sure ALL instructions in this manual have been thoroughly read and understood. Every function and operational procedure has to be understood by the operator. Any manual command (switch, button or lever) shall be given only after being sure it is the correct one.

PRECAUTIONS

The electric cable has to be compatible with the power required by the machine. Cables touching the floor or close to the machine need to be protected against short circuiting.

ROUTINE INSPECTION

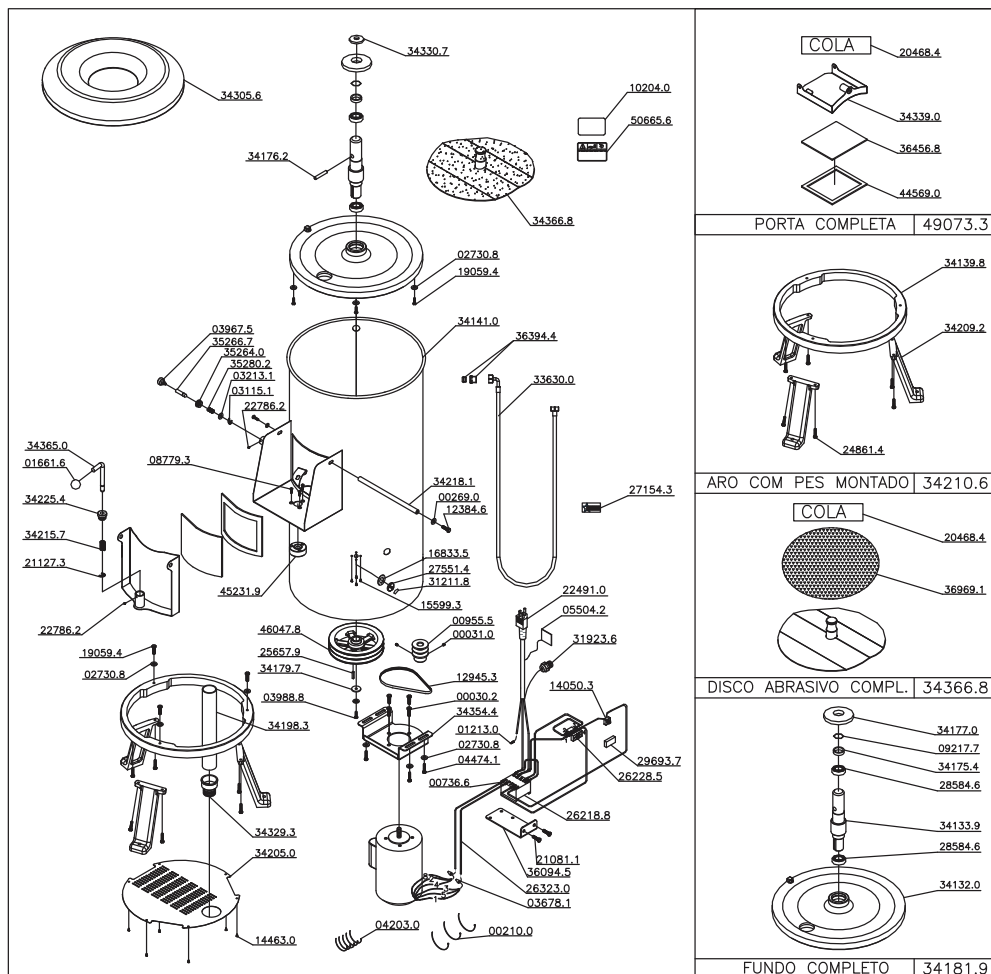
RECOMMENDATIONS

RECOMMENDATIONS

When checking the tension of the belts or chains, **DO NOT** introduce your fingers between the belts, pulleys, chain and gears.

PRECAUTIONS

Check the motor and turning or sliding parts of the machine, in case of abnormal noises. Check the tension of the belts and chains and replace the set when belt, chain or gears show signs of being worn out. When checking tension belts or chain, DO NOT introduce your fingers between belts, pulleys, chains and gears. Check protections and safety devices to make sure they are working properly.



Technical Specifications

Technical Characteristics	DB-25HD
Voltage (V)	110
Power Rating (CV)	1
Consumption (kW/h)	0.73
Height / Width / Depth (mm)	1160 × 550 × 670
Net/Gross Weight (Kg)	45/53
Capacity (Kg)	25
Average Production (Kg/h)	500

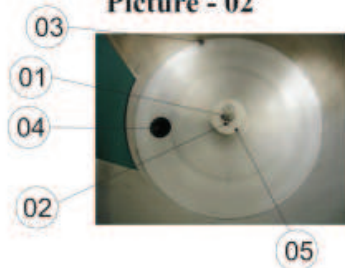
Technical Specifications

Picture - 01



Picture - 02

- 01 – Central Shaft
02 – Central Shaft Pin
03 – Lock
04 – Residue exit
05 – Rubber ring



Troubleshooting

The machine turns on but when the product is placed on the disc, it stops or spins in low rotation.	Skidding belts or problems with the electric motor.	Call a qualified technician.
Strange noises.	Abrasive Disc is misplaced. There are damaged ball bearings.	Place the Abrasive Disc appropriately on the Central Shaft Pin. Call a qualified technician.
Water leak in the bottom of the machine.	Damaged retainer.	Call a qualified technician.

ADJUSTMENTS AND REPLACEMENT OF COMPONENTS

The Abrasive Disc is covered with an aluminum oxide layer responsible for the food peeling. After some time, the aluminum oxide wears out and the efficiency of the machine decreases. The Abrasive Disc must then be replaced.

Maintenance

IMPORTANT

Never use water jets to wash the machine.

IMPORTANT

Take care of your machine and use it properly and with responsibility. It will bring you benefits.

Troubleshooting

PROBLEMS, CAUSES AND SOLUTIONS

The Potato Peeler was designed to operate with minimum maintenance. However, some irregularities may occur during its operation due to the natural wear caused by the use of the equipment. If there is any problem with your machine, check the below table for possible solutions.

Problems	Causes	Solution
The machine does not turn ON.	Power outage. Problem on internal or external electric circuit of the machine.	Check if there is power. Call a qualified technician.
Burnt smell or smoke.	Problem on the internal or external electric circuit of the machine.	Call a qualified technician.

Installation

The Potato Peeler must be installed onto a stable working surface. Verify the voltage of the power source it will be connected to (110V). The power cord has two (2) flat pins and one (1) round pin for grounding (ground wire pin). It is mandatory that the three pins are properly connected before using the equipment. It is recommended to install the machine close to a sewer or to canalize the residues by extending the Exit Tube (Pic. 1, #9) located on the lower part of the machine.

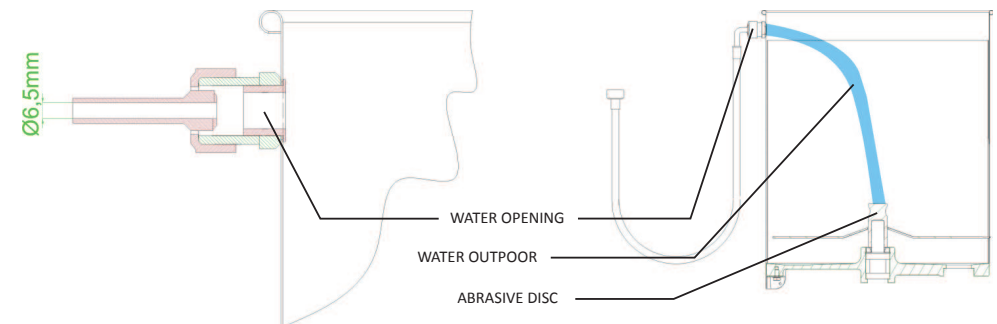
The water ouppoor thet enters the equipment must not pass beyond the center of the disc, as indicater in the drawing-01. The water outflow not exceed 3 liters per minute.

IMPORTANT

Make sure the Abrasive Disc (Pic. 1, #7) is well placed on the Central Shaft Pin (Pic. 2, #2) before switching the machine on.

Check if the Potato Peeler is firm in its position. Install the water entrance and exit. Check if the inner abrasive disc walls are properly placed. Observe the link attachment with the lock (Pic. 2, #3).

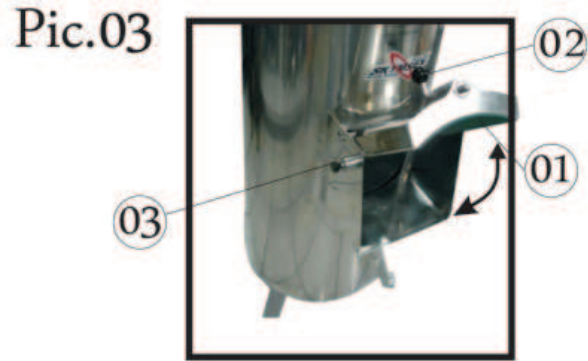
DRAWING 01



Operation

IMPORTANT

Under no circumstances touch the Abrasive Disc when it is in moving. Secure the lid (Pic. 1, #5), open the water tap, set the timer (Pic. 1, #6) and activate the ON/OFF switch (Pic. 1, #3). With the machine on, pour the product to be processed inside it. For the DB-25HD, put 25 Kg of potatoes at most. The working time varies from one (1) to five (5) minutes. If the potatoes are being peeled to irregularly, it is possible to observe the process through the lid opening. To remove the peeled product, keep the machine running and open the Door (Pic. 3, #1) by pulling the lock (Pic. 3, #2 upwards. Lift it until the side lock (Picture 3, #3) keeps the door (Picture 3, #1) open. This way the product will be expelled. To close the door, release the side lock (Pic. 3, #3) by pulling it sideways.



Operation

Do not operate the machine with long hair which might touch any part of the machine because it may lead to serious accidents. Tie your hair up well and/or cover your hair with a scarf. Only trained or skilled personnel shall operate this machine. NEVER operate the machine without all original safety devices in perfect condition.

Maintenance

Keep the machine clean. Always TURN THE MACHINE OFF by removing the plug from the socket before cleaning it. Never clean the machine unless it has come to a complete stop. Put all components back to their functional positions before turning it ON again. Do not place your fingers in between belts, pulleys, chains and gears.

DANGER

Every maintenance operation is dangerous when the machine is ON. TURN IT OFF BY PULLING THE PLUG OUT OF THE SOCKET DURING MAINTENANCE.

IMPORTANT

Always remove the plug from the power point in any case of emergency.

CLEANING

To conduct the proper cleaning of the machine, follow the instructions below:

1. Turn the empty machine on and let it function for a few minutes while adding water.
2. Switch OFF the machine and unplug it, then wait until the Abrasive Disc (Pic. 1 #7) has stopped moving completely.
3. Rub the external part of the machine with a wet cloth.
4. Remove the Abrasive Disc (Pic. 1, #7) by lifting vertically.
5. Use a brush with nylon bristles and plenty of water to clean the disc.
6. Replace the disc on the machine proceeding inversely. Make sure the disc fits proper to the pin of the central shaft.