



Metalúrgica SKYMSEN Ltda
Rodovia Ivo Silveira 9525
Volta Grande
88355-202 Brusque/SC/Brasil
CNPJ: 82.983.032/0001-19
www.skymssen.com – Fone: +55 47 3211 6000

695722 - ENGLISH

Data de Revisão : 30/08/2023

- BESIDES THIS EQUIPMENT, A COMPLETE RANGE OF OTHER PRODUCTS ARE MANUFACTURED, CONSULT OUR DEALERS.
- DUE TO THE CONSTANT IMPROVEMENTS INTRODUCED TO OUR EQUIPMENTS,
THE INFORMATION CONTAINED IN THE PRESENT INSTRUCTION MANUAL MAY BE MODIFIED WITHOUT PREVIOUS NOTICE.

WWW.SKYMSEN.COM

INSTRUCTIONS MANUAL



POTATO PEELER INOX, 25 kg, HEAVY DUTY

MODEL
DB-25HD-N

SUMMARY

1. Introduction	3
1.1 Safety	3
1.2 Main Components	5
1.3 Technical Features	6
2. Installation and Pre-Operation.....	6
2.1 Installation	6
2.2 Pre-Operation	9
3. Operation	9
3.1 Starting.....	9
3.2 Operating Procedures	9
3.3 Safety System	10
3.4 Cleaning and Sanitizing	11
3.5 Cautions with stainless steel	12
4. General Safety Practices	13
4.1 Basic Operation Procedures	13
4.2 Safety Procedures and Notes before Switching the Machine ON	14
4.3 Routine Inspection.....	15
4.4 Operation	15
4.5 After Finishing The Work.....	15
4.6 Maintenance	16
4.7 Warning.....	16
5. Analysis and Problems Solving.....	17
5.1 Problem, causes and solutions	17
5.2 Adjustments and components replacement.....	17
6. Maintenance	18
8. Electrical Diagram.....	20

This image shows a single page of white paper with horizontal blue or grey ruling lines. The lines are evenly spaced and run across the width of the page, leaving small margins at the top and bottom. There are no vertical margin lines, text, or other markings on the page.

This image shows a full page of blank handwriting practice paper. It features multiple sets of horizontal lines. Each set consists of three lines: two solid black lines forming the top and bottom boundaries, and a dashed blue line positioned exactly halfway between them. These sets are repeated vertically down the entire page, providing a guide for letter height and placement. The background is white, and there are no margins or other markings present.

When not properly used this equipment is a potentially dangerous machine. Maintenance, servicing, cleaning or any other operation shall be made by trained people. Plug has to be off outlet during any of these operations.

1.1.1 Read completely these instructions.

1.1.3 When the equipment is in operation the operator shall supervise it, principally when children might be near.

1.1.5 Do not operate the equipment if the cord or plug are damaged. Do not lean the cord on table edges, nor let them lie on hot surfaces.

1.1.7 The use of accessories not recommended by the manufacturer may cause corporal damages.

1.1.9 During operation never wear loose clothes with wide sleeves principally around the wrists.

1.1.11 When placing the Disc #.07 (Pic. 01) make sure its perfect fitting on Central Shaft Pin # 02 (Pic. 02) avoiding to damage the equipment.

The use of this equipment is not recommended when:

The production process is continuous on an industrial scale.

For enhanced operator protection this equipment is provided with a safety system not allowing to be involuntary switched ON after an eventual energy shortage.

Make sure the cord is in perfect conditions for use. If it is not, change it for a new one in accordance with the technical specifications and safety rules. The substitution shall be made by a qualified professional, and shall respect the local safety norms.

This equipment must not be used by children or any persons with reduced physical or mental aptness, lack of experience or knowledge, unless they are under supervision or have received from the person responsible for safety, proper instructions on how to use the equipment.

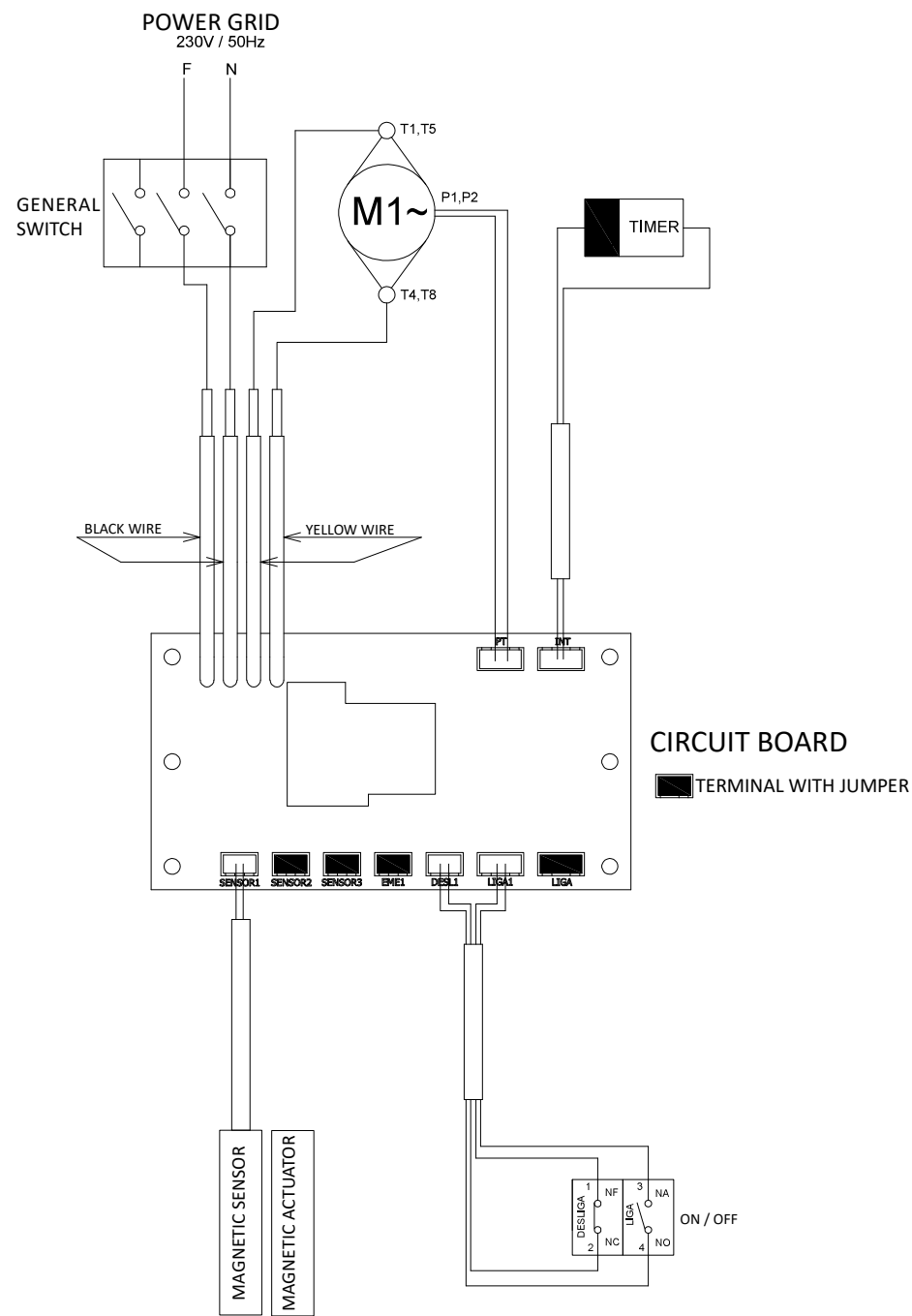
Children shall be watched in order to avoid them to play with the equipment.

In case of emergency take off the plug from its socket.

Never spray water directly on to the equipment.

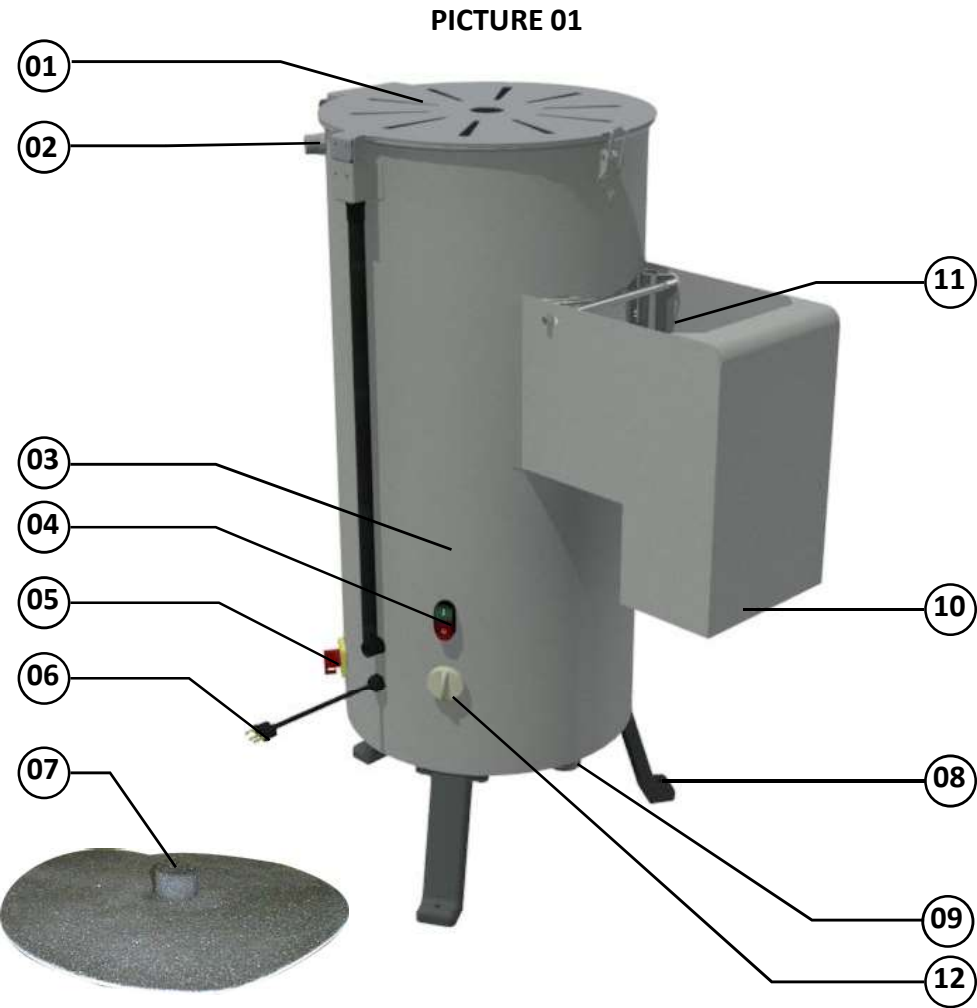
[illegible]

8. Electrical Diagram



1.2 Main Components

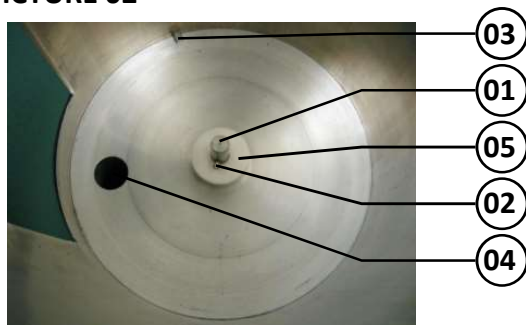
All components are made with carefully selected materials, in accordance with Skymssen experience and standard testing procedures.



- 01 – Protection Lid
- 02 – Nipple – Water Entrance
- 03 – Motor Housing
- 04 – ON/OFF Switch
- 05 – General Switch
- 06 – Cable with Plug

- 07 – Abrasive Disc
- 08 – Feet
- 09 – Exit Pipe
- 10 – Product Exit Mouth
- 11 – Door
- 12 – Timer

PICTURE 02



- 01 - Central Shaft
- 02 - Central Shaft Pin
- 03 - Lock
- 04 - Exit Pipe
- 05 - Rubber Ring

1.3 Technical Features

CHART 01

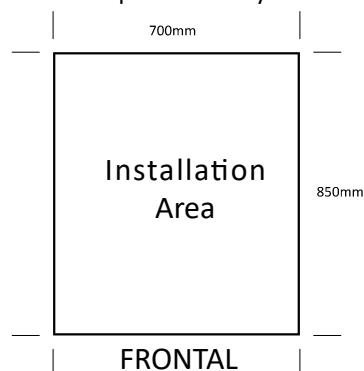
FEATURES	UNIT	DB-25HD-N
Average Production	kg/h	up to 500
Voltage	V	230
Frequency	Hz	50
Power Rating	W	820
Height	mm	1135
Width	mm	650
Depth	mm	825
Net Weight	kg	60
Gross Weight	kg	92

2. Installation and Pre-Operation

2.1 Installation

2.1.1 Positioning

The equipment must be placed on to a plane and dry surface.



6. Maintenance

Maintenance must be considered a set of procedures with the purpose to keep the equipment best operating conditions, therefore increasing the equipment life and safety.

* Cleaning – Check item 3.4 Cleaning.

* Wiring – Check all wires regarding deteriorate conditions as well as all electric contacts (terminals) regarding tightening and corrosion.

* Contacts – ON/OFF switch, emergency button, reset button, electronic circuits etc, check the equipment in order to assure that all components are correctly working and the equipment operation is normal.

* Installation – Make sure the installation followed item 2.1 instructions.

1 - Each month check:

- Check the electrical installation;
- Measure the voltage at the socket;
- Measure the working current and match it with the nominal current;
- Check the tightening of all electric terminals to avoid bad contacts ;
- Check electric motor shaft clearance;
- Check the wiring for overeating, insulation failures and mechanical damages.

2 - Each three month checks:

- Check electrical components such as ON/OFF switch, emergency button, reset button, electronic electric circuits, overeating, insulation failings, or mechanical damages.
- Check bearings clearances.
- Check retainers, O’rings, V’rings and other seals.

CHART 02

PROBLEMS	CAUSES	SOLUTIONS
- The machine does not start.	<ul style="list-style-type: none"> - Electric energy shortage. - Problem with the internal or external wiring. 	<ul style="list-style-type: none"> - Check electric Energy source. - Call Technical Assistance.
- Burnt smell or smoke.	<ul style="list-style-type: none"> - Problem with the internal or external wiring. 	<ul style="list-style-type: none"> - Call Technical Assistance.
- The machine starts, but when the product is placed on the Disc, the Disc stops or turns slowly.	<ul style="list-style-type: none"> - Belts sliding. - Problem with the Electric motor. 	<ul style="list-style-type: none"> - Call Technical Assistance. - Call Technical Assistance.
- Damaged Cord.	<ul style="list-style-type: none"> - Problem during transportation. 	<ul style="list-style-type: none"> - Call Technical Assistance.
- Abnormal Noises.	<ul style="list-style-type: none"> - Problems with the bearings. 	<ul style="list-style-type: none"> - Call Technical Assistance.

2.1.2 Electrical Installation

This equipment has been designed for 230 V (50Hz). When receiving the equipment check the voltage indicated on the cord label.

The cord has a plug with three pins, the middle one is ground. It is mandatory the three pins to be duly connected before to start the machine.

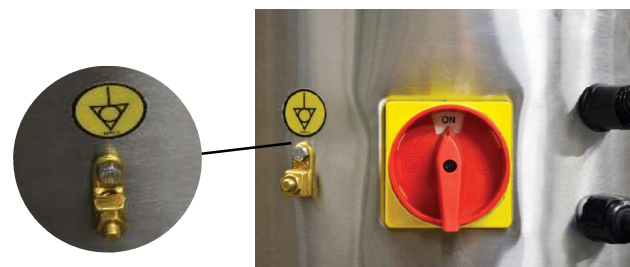
IMPORTANT
Make sure the network voltage is the same as the voltage indicated on the cord label.

The figure below shows the external equipotential terminal.

This should be used to ensure that there is no potential difference between different devices connected to the electrical network, minimizing the risks of electric shocks.

The various devices must be connected to each other through their respective equipotential bonding terminals.

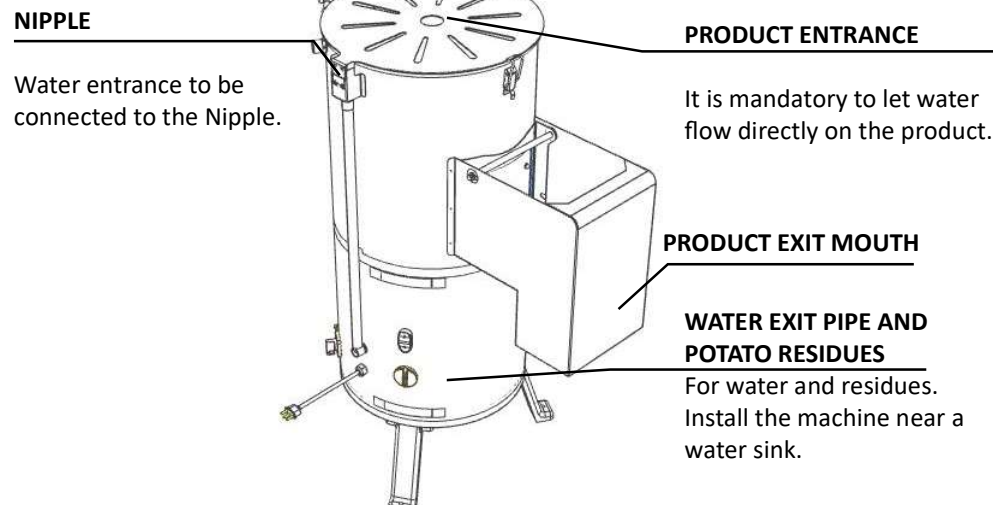
PICTURE 03



2.1.3 Hydraulic Installation

It is recommended to install the machine near a water sink connecting it with a pipe to the water Exit Pipe # 09 (Pic. 01). Install also a 3/4" water inlet pipe and connect it to the Water Entrance Nipple # 02 (Pic. 01).

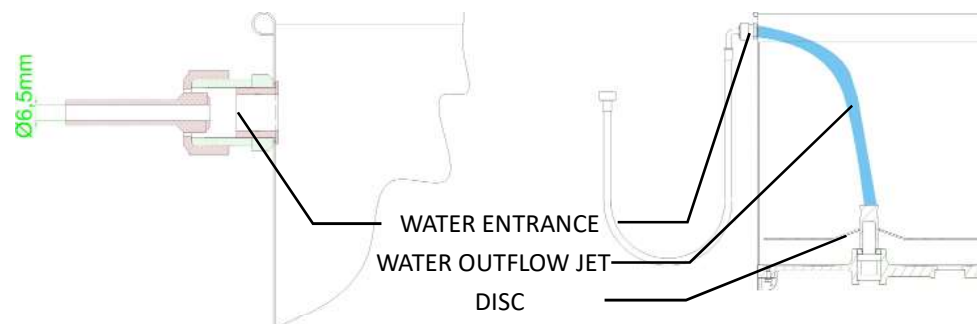
PICTURE 04



The water outflow jet shall not drop beyond the disc centre as shown on Picture 05.

The water outflow shall not exceed 2.5 litres per minute.

PICTURE 05



The new hoses supplied with the equipment must be used, and the old ones should not be reused.

The values for the equipment's maximum and minimum water pressure are described below:

UNITS	MINIMUM	MAXIMUM
millimeter of water column	2040	40816
kgf per cm ²	0,2	4
Bar	0,2	4
Psi	2,9	58
Pascal	20 000	400 000

5. Analysis and Problems Solving

5.1 Problem, causes and solutions

The Peelers were designed to operate with the need of minimum maintenance but the natural wearing caused by long use of the equipment may occasionally cause some malfunctions.

If such problem occurs with your peeler refer to Table 02 in which the most common situations are listed with recommended solutions.

5.2 Adjustments and components replacement

The Disc # 08 (Pic.01) is coated with ALUMINIUM OXIDE, responsible to wear the potatoes peel. After some time the Aluminium Oxide will be worn out and therefore the machine efficiency will drop.

Whenever it happens take the disc to Technical Assistance to renew the coat.

Do NOT insert your fingers in between belts and pulleys nor chains and gears.

4.6 Maintenance

4.6.1 Danger

Any maintenance with the machine in working situation is dangerous.

TURN IT OFF BY PULLING THE PLUG OFF THE SOCKET DURING MAINTENANCE.

IMPORTANT

Always remove the plug from the socket in any emergency situation.

4.7 Warning

Electrical or mechanical maintenance has to be undertaken by qualified personnel.

The person in charge of maintenance has to be sure that the machine is under TOTAL SAFETY conditions when working.

2.2 Pre-Operation

Before to use the equipment all parts to be in contact with the product shall be washed with water and neutral soap (see item 3.4 Cleaning).

Make sure the equipment is firm on its working place.

3. Operation

3.1 Starting

To start the equipment:

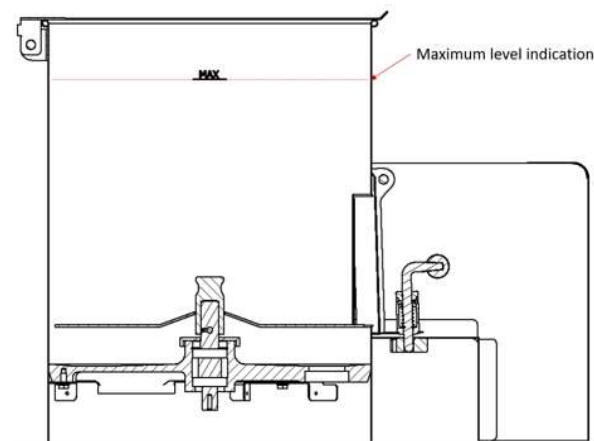
- Plug the equipment to the electric network.
- Check if the Protection Lid is properly positioned at its workplace.
- Position General Switch # 05 (Fig. 01) located at the rear of Cabinet # 03 (Fig. 01) to the "ON" position.

Set the timer # 12 (Fig. 01) to the desired time.

Press the On/Off Switch # 04 (Fig. 01) to the "I" position to turn on the equipment.

3.2 Operating Procedures

- Place the product inside the equipment;
- Close the Lid;
- The equipment does not start if the Lid # 01 (Pic. 01) is not closed;
- Proceed as instructed on item 3.1;
- Open the water flow;
- The Peeler has a maximum capacity of 25 Kg potatoes and the processing time is 1 to 5 minutes;
- Never fill the machine above the maximum level indicated inside the cabinet:



- Remove the product using the Product Exit Mouth # 10 (Fig.01), just lifting the Door # 11 (Pic. 01) letting go completely out all the product.

3.3 Safety System

This equipment is provided with a safety system not allowing to be involuntary switched ON after an eventual energy shortage. The equipment does not work if the Protection Lid Nr. 01 (Pic.01) is not properly positioned at its workplace.

IMPORTANT

This equipment has a safety system to ensure the integrity of the operator. The operation of the equipment must be done as described in the item "Operation" of this manual. Other procedures to operate it are unsafe, in this condition the equipment should not be used.

4.2.3 Precautions

The electric cable has to be compatible with the power required by the machine.

Cables touching the floor or close to the machine need to be protected against short circuits.

4.3 Routine Inspection

4.3.1 Advice

When checking the tension of the belts or chains, DO NOT insert your fingers between the belts and the pulleys and nor between the chain and the gears.

4.3.2 Precautions

Check the motor and sliding or turning parts of the machine in case of abnormal noises.

Check the tension of the belts and chains and replace the set when belts or chains show signs of wearing.

When checking the tension of belts or chains DO NOT insert your fingers between belts and pulleys, nor between the chains and gears.

Check protections and safety devices to make sure they are working properly.

4.4 Operation

4.4.1 Warnings

Do not use the machine with long hair that could touch any part of the machine. This might lead to a serious accident. Tie your hair up well and/or cover it with a scarf.

- Only trained or skilled personnel shall operate this machine.
- Never touch turning parts with your hands or any other way.
- NEVER operate the machine without any original safety devices under perfect conditions.

4.5 After Finishing The Work

4.5.1 Precautions

Always TURN THE MACHINE OFF before cleaning by removing the plug from the socket. Never clean the machine unless it has come to a complete stop.

Put all the components back to their functional positions before turning the machine ON again.

Never touch any manual commands (switch, buttons) unadvisedly.
If any work is to be made by two or more persons, coordination signs will have to be given for each operation step. Every step of the operation shall be taken only if a sign has been made and responded.

4.1.3 Advices

In case of power shortage, immediately switch the machine off.

- Use recommended or equivalent lubricants, oils or greases.
- Avoid mechanical shocks, once they may cause damages or bad functioning.
- Avoid water, dirt or dust contact to the mechanical and electrical components of the machine.
- DO NOT change the standard characteristics of the machine.
- DO NOT remove, tear off or maculate any safety or identification labels stuck on the machine. If any labels have been removed or are no longer legible, contact your nearest dealer for replacement.

4.2 Safety Procedures and Notes before Switching the Machine ON

IMPORTANT

**Carefully read ALL INSTRUCTIONS of this manual before turning the machine ON.
Be sure to well understand all the information contained in this manual. If you
have any question contact your supervisor or your nearest Dealer.**

4.2.1 Danger

An electric cable or electric wire with damaged jacket or bad insulation might cause electrical shocks as well as electrical leak. Before use, check the conditions of all wires and cables.

4.2.2 Avisos

Be sure to well understand all the information contained in this manual. Every operation function or procedure has to be thoroughly clear.

Before using any commands (switch, buttons, lever), be sure it is the correct one. In case of doubt, consult this manual.

3.4 Cleaning and Sanitizing

IMPORTANT

Unplug the machine from the electric network, before to start cleaning.

The equipment shall be totally cleaned and sanitized:

- Before the first use.
- After every day operation is ended.
- After a long period without being used.

Some parts of the equipment may be removed:

- Disc # 07 (Pic. 01)

To achieve a good machine cleaning , follow instructions below:

- 1 - Start the machine empty, and let it work during some minutes, adding abundant water.
- 2 - Switch OFF the machine and unplug it. Wait for the Disc # 07 (Pic. 01) to stop completely.
- 3 - Clean the outside of the housing with a wet cloth.
- 4 - Remove Disc # 07 (Pic. 01).
- 5 - Clean the Disc using a nylon brush and abundant water.
- 6 - Replace the Disc inside the machine. Make sure to have the Disc fitting on the central shaft pin # 02 (Pic. 02)
- 7 - Start the machine empty and let it work some minutes, always with abundant water.
- 8 - Close the Lid # 01 (Pic. 07).

All parts shall be washed with water and neutral soap.

IMPORTANT

Never spray water directly on to the equipment.

IMPORTANT

This equipment should not be cleaned with a water jet or steam cleaner.

3.5 Cautions with stainless steel

The Stainless Steel may present rust signs, which ARE ALWAYS CAUSED BY EXTERNAL AGENTS, especially when the cleaning or sanitization is not constant and appropriate.

The Stainless Steel resistance towards corrosion is mainly due to the presence of chrome, which in contact with oxygen allows the formation of a very thin protective coat. This protective coat is formed through the whole surface of the steel, blocking the action of external corrosive agents.

When the protective coat is broken, the corrosion process begins, being possible to avoid it by means of constant and adequate cleaning. Cleaning must always be done immediately after using the equipment. For such end, use water, neutral soap or detergent, and clean the equipment with a soft cloth or a nylon sponge. Then rinse it with plain running water, and dry immediately with a soft cloth, this way avoiding humidity on surfaces and especially on gaps.

The rinsing and drying processes are extremely important to prevent stains and corrosion from arising.

IMPORTANT

Acid solutions, salty solutions, disinfectants and some sterilizing solutions (hypochlorites, tetravalent ammonia salts, iodine compounds, nitric acid and others), must be AVOIDED, once it cannot remain for long in contact with the stainless steel.

These substances attack the stainless steel due to the CHLORINE on its composition, causing corrosion spots (pitting).

Even detergents used in domestic cleaning must not remain in contact with the stainless steel longer than the necessary, being mandatory to remove it with plain water and then dry the surface completely.

Use of abrasives:

Sponges or steel wool and carbon steel brushes, besides scratching the surface and compromising the stainless steel protection, leave particles that rust and react contaminating the stainless steel. That is why such products must not be used for cleaning and sanitization. Scrapings made with sharp instruments or similar must also be avoided.

Main substances that cause stainless steel corrosion:

Dust, grease, acid solutions such as vinegar, fruit juices, etc., saltern solutions (brine), blood, detergents (except for the neutral ones), common steel particles, residue of sponges or common steel wool, and also other abrasives.

4. General Safety Practices

The following safety instructions are addressed to both the operator of the machine as well as the person in charge of maintenance.

The machine has to be delivered only in perfect conditions of use by the Distributor to the user. The user shall operate the machine only after being well acquainted with the safety procedures described in the present manual. **READ THIS MANUAL WITH ATTENTION.**

IMPORTANT

The changes in the protection systems and safety devices of the equipment will imply serious risks to the physical integrity of individuals during the phases of operation, cleaning, maintenance, and transportation, as per the ISO 12100 standard.

4.1 Basic Operation Procedures

4.1.1 Dangers

Some areas of the electric device have parts that are connected or have parts connected to high voltage. These parts when touched may cause severe electrical shocks or even be lethal.

Never touch manual commands such as switches, buttons, turning keys and knobs with your hands wearing wet clothes and/or wet shoes. By not following these instructions operator could be exposed to severe electrical shocks or even to a lethal situation.

4.1.2 Warnings

The operator has to be well familiar with the position of ON/OFF Switch to make sure the Switch is easy to be reached when necessary.

Before any kind of maintenance, physically remove plug from the socket.

Provide space for a comfortable operation thus avoiding accidents.

Water or oil spilled on the floor will turn it slippery and dangerous. Make sure the floor is clean and dry.

Before using any commands (switch, buttons, etc.), be sure it is the correct one. In case of doubt, consult this manual.