

Blank lined area for notes.

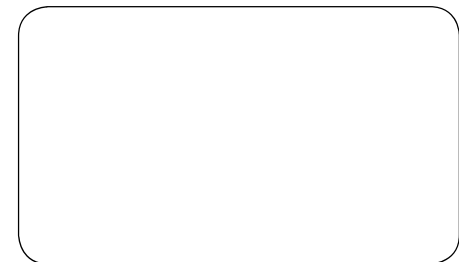
INSTRUCTIONS MANUAL



TABLE BAND SAW, BLADE 1.740 MM / 68,5"

MODEL
SBL

695724 - ENGLISH
Data de Revisão: 30/08/2023
Metalúrgica Skymssen Ltda
Rodovia Ivo Silveira 9525
Volta Grande
88355-202 Brusque/SC/Brasil
CNPJ: 82.983.032/0001-19
www.skymssen.com – Fone: +55 47 3211 6000



DUE TO THE CONSTANT IMPROVEVENTS INTRODUCED TO OUR EQUIPMENTS, THE INFORMATIONS CONTAINED IN THIS MANUAL MAY BE MODIFIED WITHOUT PREVIOUS NOTICE.

SUMMARY

1. INTRODUCTION	2
1.1 Safety	2
2. MAIN COMPONENTS AND TECHNICAL CHARACTERISTICS	2
3.INSTALLATION AND PRE-OPERATION..	3
3.1 Placing	3
3.2 Electrical Installation.....	3
3.3 Pre-Operation	3
4. OPERATION.....	3
4.1 Starting	3
4.2 Operation Procedures	3
4.3 Safety System	4
5. CLEANING	4
6. MAINTENANCE	5
7. PROBLEMS RESOLUTION.....	6
8. ELECTRICAL DIAGRAMS.....	7

1. INTRODUCTION

This equipment has been developed for commercial operation, it is used for instance in restaurants, fast foods, hospitals, bakeries, butchers and similar.

It is not recommended to use it:

- The production process is done in a continuous industrial scale;
- The workplace is in a corrosive, explosive, contaminated with vapor, powder or gas atmosphere.

1.1 Safety

The instructions below must be followed to avoid accidents, non-compliance can cause serious injuries:

1.1.1 Never use this Equipment with wet clothes or wet feet or on a wet or humid surface, do not immerse it under water, do not place under any kind of water flow, hose, tap or similar, do not use water jets of any kind on the equipment.

1.1.2 If the Equipment physically falls down, in any way, suffers any kind of damage or has stopped working for any reason, it is necessary to call specialized technical assistance.

1.1.3 The use of unauthorized accessories that are recommended by the manufacturer can lead to injuries.

1.1.4 Keep hands or any kind of tools away from the moving parts of the Equipment while it is turning on to avoid potential damages to the Equipment and injuries to the end user.

1.1.5 Never operate the Equipment while wearing clothes with long sleeves, especially on the wrists.

1.1.6 Make sure that the voltage of Equipment and of the local electrical supply match. Also make sure that the equipment is properly grounded.

1.1.7 Never adjust the Blade Guide nor the Thickness Guide with the machine running.

⚠ This Equipment cannot be operated by persons (children included) with reduced mental, sensorial or physical capacities. Unexperienced persons or persons without proper training of knowledge cannot operate this equipment. Only apt and trained persons or persons under the supervision of an apt and trained supervisor must operate the equipment.

⚠ We recommend children to be watched to not allow them to play with the machine.

⚠ Always disconnect the Equipment from the power supply when: It is not being used, before realizing any cleaning or maintenance, before you place or take out any accessories, before you realize any kind of procedure or service with the unit.

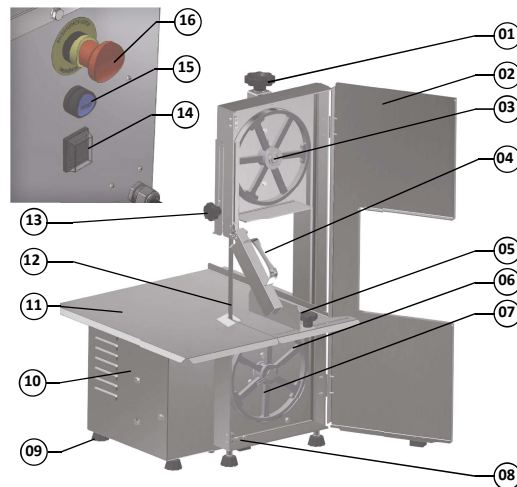
⚠ Do not operate the equipment if the cord or plug are damaged. Do not lean the cord on table edges, nor let them lie on hot surfaces. Make sure the cord is in perfect working conditions, if not, change it for one in accordance to the local safety standards. Such change shall be made by qualified professional following the local safety standards.

⚠ In case of emergency, unplug the appliance from wall electrical outlet immediately.

⚠ Never wash the appliance with direct intense water jets.

2. MAIN COMPONENTS AND TECHNICAL FEATURES

Picture 01



- | | |
|---------------------------------------|-----------------------|
| 01 – Blade Tension Calibrating Handle | |
| 02 – Door | 10 – Motor Housing |
| 03 – Upper Wheel | 11 – Fixed Table |
| 04 – Frontal Protection | 12 – Blade |
| 05 – Cutting Regulator | 13 – Blade Guide |
| 06 – Inferior Wheel | 14 – ON/OFF Switch |
| 07 – Stamp | 15 – Reset Switch |
| 08 – Safety Sensor | 16 – Emergency Button |
| 09 – Foot | |

This image shows a single sheet of white paper with horizontal ruling lines. The lines are evenly spaced and run across the width of the page. There are no margins, text, or other markings on the paper.

3

The Upper Wheel No. 03 (Pic.01) has in its structure the shaft and the bearing.

The control panel is located on the right side of the equipment and has 01 ON/OFF Switch No. 14 (Pic. 01), 01 Reset Button No. 15 (Pic. 01) and 01 Emergency Button No. 16 (Pic. 01). To turn on the machine, proceed as described in item 4.1.

Before turning on the equipment

Put the product to be cut on the Fixed Table № 11 (Pic. 01).
Regulate the thickness of the slices adjusting the Cutting
Regulator № 05 (Pic. 01).

Lift the Frontal Protection No. 04 (Pic. 01) placing it on the product to be cut.

Adjust the Blade Guide No. 13 (Pic. 01) to no more than the height of the product to be cut.

Stay in front of the machine to have a front sight of the Blade.

Turning on the equipment

To turn on the appliance, press the "I" button on the ON/OFF Switch № 13 (Pic. 01).

Catch the product with the left hand and the Frontal Protection Nº 04 with the right hand. Push the product against the Blade cutting it at constant speed.

After finishing the whole slice remove it with the right hand. The slice shall ALWAYS be removed behind the Blade to avoid the hand to contact the Blade.

Place the slices upon the Fixed Table # 11 (Pic. 01).

Bring back the product to the front side of the machine and repeat the above steps until to have finished to cut all the product.

After the end of the last slice turn the ON/OFF Switch to the position "O" (OFF) No. 14 (Pic 01).

⚠ The slice shall ALWAYS be removed behind the Blade to avoid the hand to contact the Blade.

4.3 Safety System

This equipment has a safety system that prevents the unit from immediately turning on, when the electric power is restored after an electrical grid failure. It has :

- 01 sensor located at the door;
- Motor stopping/breaking system;
- Monitoring system with electronic relay;
- Control panel with maximum voltage of 25 V.

This equipment has a safety system that assures the operator's physical integrity. This equipment's operation must follow the instructions given in the "Operation" item of this manual. Other procedures to operate this equipment are unsafe and must not be conducted, in this condition the equipment must not be used.

5. CLEANING

When the equipment must go through a complete cleaning and sanitization process:

- Before to be used first time;
- After every day end of operations;
- When the saw is not going to be used for a long period.
- Before to start operation after a long period it has not been used.

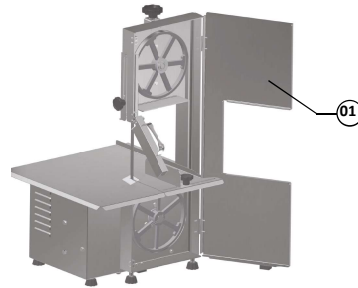
Some components may be removed to clean.

Follow below instructions to remove the above mentioned components:

Door

Open the Door N° 01 (Fig. 03) turning it to the right.

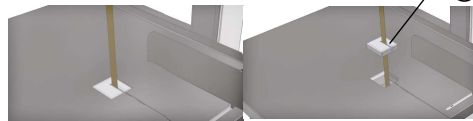
Picture 03



Fixed Table Block

Remove the Fixed Table Block #01 (Pic. 04) just lifting it, see picture 04.

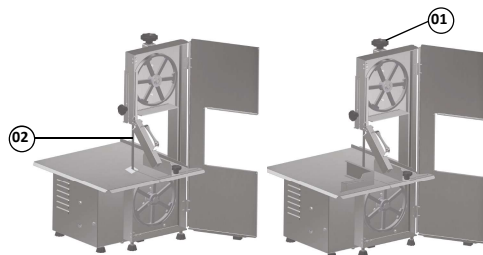
Picture 04



Blade

Turn the Blade Tension Regulator Handle # 01 (Pic. 05) counter clockwise to get the Blade # 02 (Pic. 05) free to be removed.

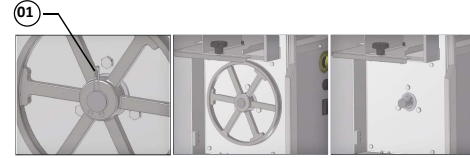
Picture 05



Lower Wheel

Remove the Shaft No. 01 (Pic. 06), grab strongly the Lower Wheel and pull it towards the front of the machine until its complete removal.

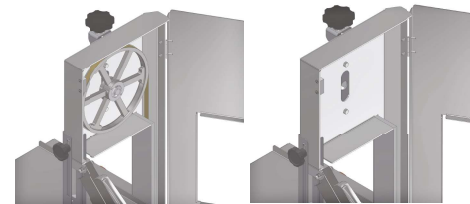
Picture 06



Upper Wheel

After removing the Blade grab strongly the Upper Wheel No. 01 (Pic. 07), then lift it and pull it to the front side of the machine.

Picture 07



Use a clean cloth or a soft brush to remove residues.

Wash, sanitize, rinse and dry all the components.

Assemble back all the components following the inverse path, and make sure all the components are correctly in place.

Use Your QR Code Reader to access more information regarding the cares needed when handling stainless Steel.



6. MAINTENANCE

Maintenance must be considered a set of procedures with the purpose to keep the equipment best operating conditions, therefore increasing the equipment life and safety.

* Cleaning – Check item 5 CLEANING.

* Wiring - Check all wires regarding deteriorate conditions as well as all electric contacts (terminals) regarding tightening and corrosion.

* Contacts – ON/OFF switch, emergency button, reset button, electronic circuits, etc., check the equipment in order to assure that all components are correctly working and the equipment operation is normal.

* Installation – make sure the installation followed item 3 instructions.

* Life span: 50.000 cycles as per test standard.

1 – Each month check:

- Check the electrical installation;
- Measure the voltage at the socket ;
- Measure the working current and match it with the nominal current;
- Check the tightening of all electric terminals to avoid bad contacts.
- Check electric motor shaft clearance;
- Check the wiring for overheating, insulation failures and mechanical damages.

2 – Each three month checks:

- Check electrical components such as ON/OFF switch, emergency button, reset button, electronic electric circuits, overheating, insulation failings, or mechanical damages
- Check bearings clearances;
- Check retainers, O’rings, V’rings and other seals.

Use Your QR Code Reader to access more information regarding safety and maintenance.



7. PROBLEMS RESOLUTION

PROBLEMS	CAUSES	SOLUTIONS
- The equipment does not switch on.	- Lack of Power; - Problem with the internal or external electric circuits.	- Check if there is electric power. - Call Technical Assistance.
- Machine switch on but when product touches the blade it stops or runs slowly.	- Belt slipping on pulleys. - Damaged Motor.	- Adjust the blade tension, see item 4.2.3; - Call Technical Assistance.
- Smoke or burn smell.	- Problem with the internal or external electric circuits.	- Call Technical Assistance.
- Blade breaks frequently.	- Dirty Blade or Wheel. - Wheel Damaged.	- Clean, see the item 5 CLEANING. - Call Technical Assistance.
- Damaged Cord.	- Problem during transportation.	- Call Technical Assistance.
- Unusual noises.	- Problems with bearings.	- Call Technical Assistance.
- Difficulties to cut the product.	- Dirty blade or wheels. - Blade with wrong tension; - Blade is not on wheels center; - Blunt blade.	- Clean,see the item 5 CLEANING; - Adjust the blade tension, see item 4.2.3; - Call Technical Assistance. - Change the Blade.

8. ELECTRICAL DIAGRAMS

